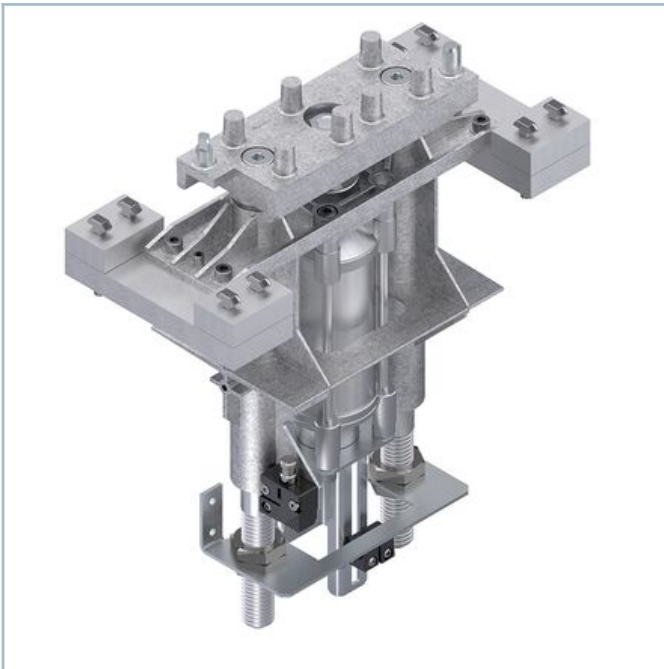


## Lift Positioning Unit HP 2



- Positioning using the positioning pins of the HP 2 and positioning bushings of the WT 2 workpiece pallet

[PDF](#) Assembly instructions

- Lifting cylinder with adjustable damping of the upper and lower end positions
- Upper end damping takes effect only under full lift
- Infinitely adjustable lift height in 8 lift ranges  $h_N$  from 0 ... 404 mm

## Technical data

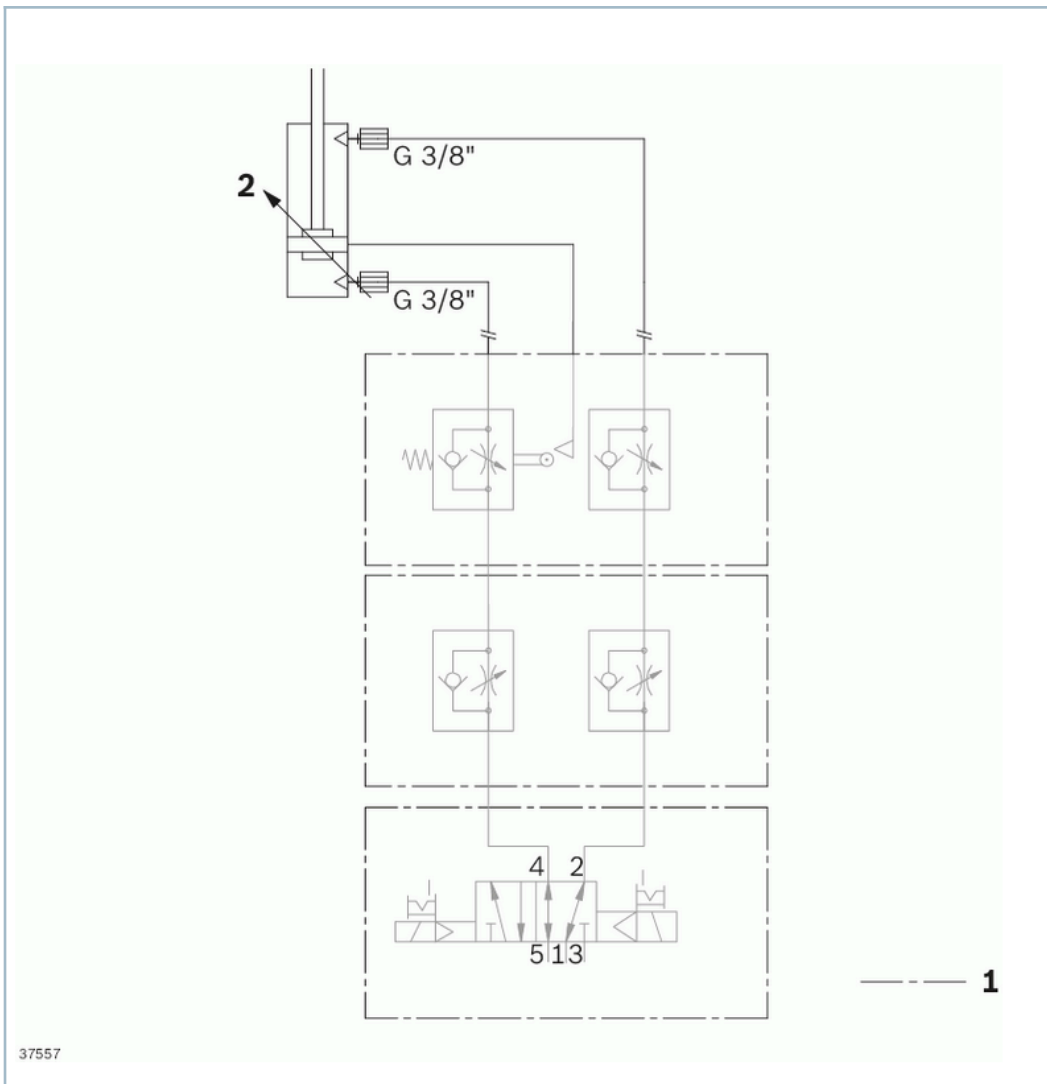
No.	Max. total weight of workpiece pallet	ESD	Reproducing accuracy	Permissible vertical process force	Required compressed air connection	Pneumatic push-in fitting
	$m_G$			F	p	Ø
	kg		mm	N	bar	mm
3842999678	110	yes	±0,05	1100	4 ... 6 bar	6
3842999028	110	yes	±0,05	1100	4 ... 6 bar	6

### Lift range

Cylinder total lift	Nominal stroke	WT lift above conveying level
$h_G$	$h_N$	$h_0$
(mm)	(mm)	(mm)
80	55	0 ... 59
125	100	0 ... 104
175	150	0 ... 154
225	200	0 ... 204
275	250	0 ... 254
325	300	0 ... 304
375	350	0 ... 354
425	400	0 ... 404

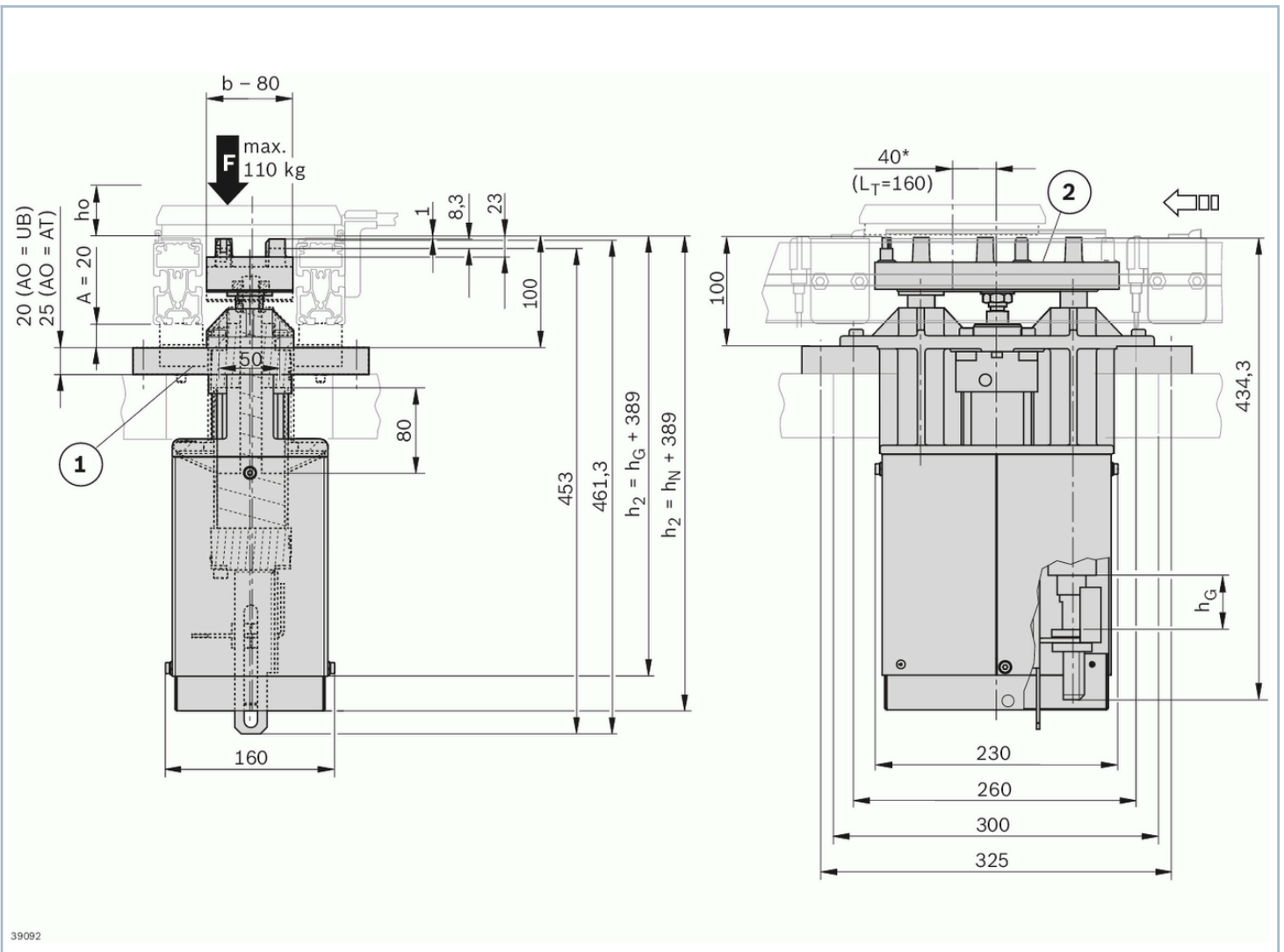
Compressed air consumption of TS 2plus units

## Symbols/Circuit diagrams



1) Not included in the scope of delivery

## Dimensions



39092

\* = eccentric position for workpiece pallet with  $L_T = 160 \text{ mm}$

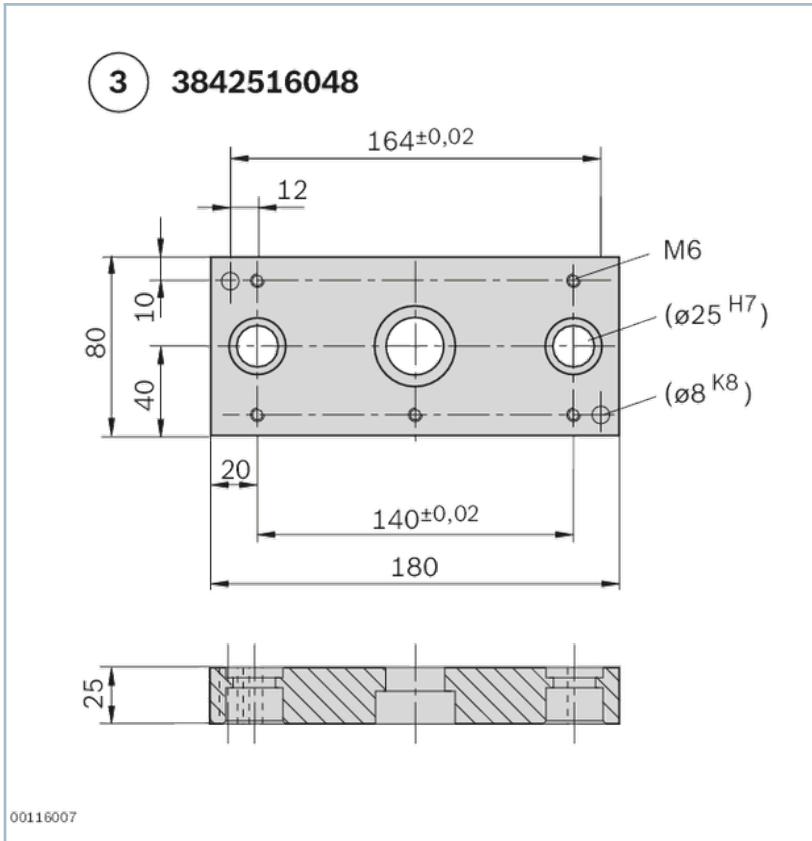
1 = fastening kit (UB or AT)

2 = positioning plate

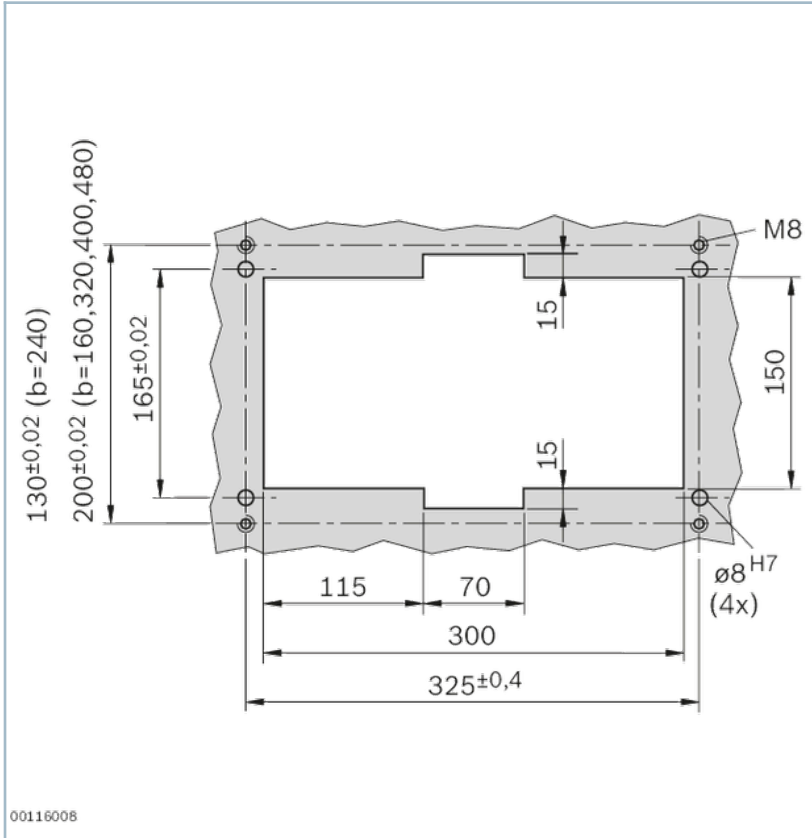
$h_0$  = WT lift above conveying level

$h_G$  = cylinder total lift

## Lift Positioning Unit HP 2



Lifting plate



# Accessories

## Required accessories

Stop gate VE 2/...

Throttle non-return valve, exhaust air, G3/8', diameter Ø 6 mm

Sensor

## Recommended accessories

HP2 Housing Element

---

## Delivery notes

### Scope of delivery

Incl. fastening material

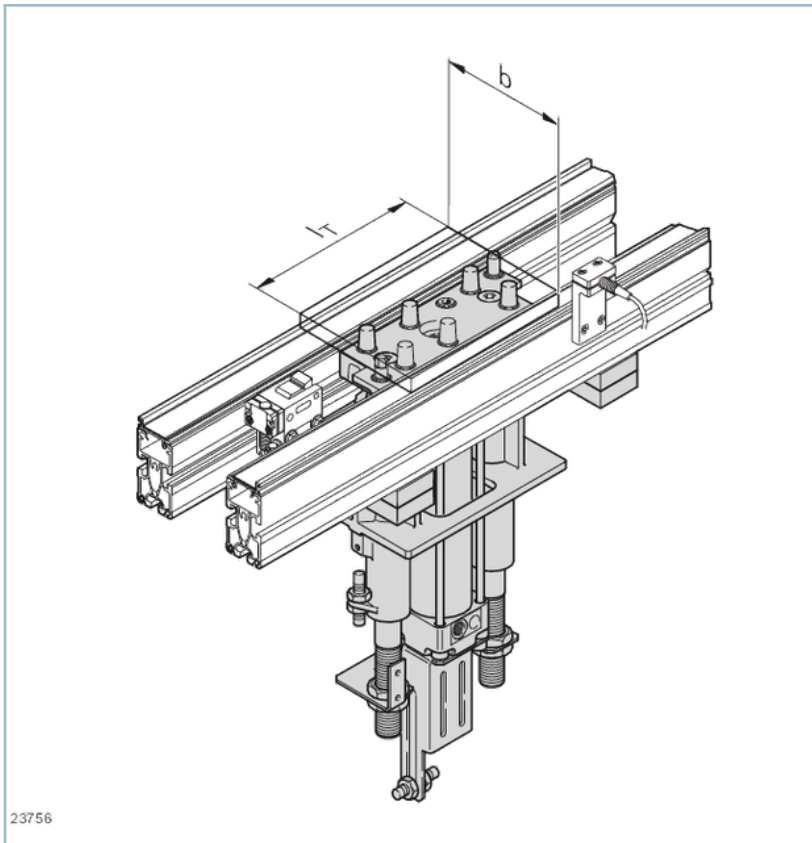
Switch bracket for mounting of M12 sensors top and bottom for lift position inquiry

### Condition of Delivery

Fully assembled

---

## Ordering codes



23756

## Order Parameter

No.		3842999678	3842999028
b (mm)	Track width in the direction of transport	160; 240; 320; 400; 480	
l <sub>T</sub> (mm)	Length in direction of transport	0; 160; 240; 320; 400; 480; 640; 800	
b x l <sub>T</sub> (mm x mm)	Combination Options	160 x 0; 160; 240; 320; 400; 480 240 x 0; 160; 240; 320; 400; 480 320 x 0; 160; 240; 320; 400; 480 400 x 0; 320; 400; 480; 640; 800 480 x 0; 320; 400; 480; 640; 800	
h <sub>N</sub> (mm)	Nominal stroke	55; 100; 150; 200; 250; 300; 350; 400	
A <sub>O</sub>		UB; AT; O	

	No.
HP 2 lift positioning unit	3842999678
	3842999028