

# Illumination for **MACHINE VISION** 2022



Visionlux Technology Sdn Bhd is a one-stop LED lighting solution manufacturer for the machine vision industry in Malaysia since 2018. We produce many types of standard and customize illuminators coupled with a variety of controllers and accessories.

We are the experts in developing and providing rapid LED Lighting prototyping and controls which are targeted for special applications that are difficult to be achieved. In order to allow our customers to achieve speedy results, we created a 24/7 available automated designer, which is our Online Customization platform. This platform enables customers to browse, design and get the electric data and 2D drawing immediately.

We strive on fast delivery and conveniences on our products and services for our customers. Our website is designed to be as informative as possible to give our customers a smooth user experience, from surfing the products till making a purchase and payment online.

Visionlux Technology has managed to capture the attention and interest of many foreign companies and countries. We wish to provide valuable services that enables us to serve our customers 24/7 even with different time zones. Our Online Shop enable you to check availability products, order and make payment immediately.

A huge Thank You to our customers for the continuous support that has given towards Visionlux, as well as opening the opportunity and ability to grow internationally with great success.

VISIONLUX lightings have an edge over others bearing qualities.

- High Quality
- Robust
- Flexible Design
- Plug & Play Concept
- Modular Concept
- Cascaded Design
- Customization Allow
- Cost Effective
- Time Saving

# CONTENTS

2022



<b>Product Part Numbers</b>	01
<b>Product Part Numbers</b>	02
<b>HBBX Series</b> ( <i>High Intensity Backlight</i> )	03
<b>HBBQ Series</b> ( <i>Front Light with Center Hole</i> )	04
<b>BHD2 Series</b> ( <i>Thin Backlight</i> )	05
<b>BHDQ2 Series</b> ( <i>Thin Front Light with Center Hole</i> )	06
<b>HBAX Series</b> ( <i>High Intensity Backlight</i> )	07
<b>HBAQ Series</b> ( <i>High Intensity Front Light with Center Hole</i> )	08
<b>HBBC Series</b> ( <i>High Intensity Collimated Backlight</i> )	09
<b>HBQ3 Series</b> ( <i>High Power Front Light</i> )	10
<b>HBR3 Series</b> ( <i>High Power Front Light with Center Hole</i> )	11
<b>HBL3 Series 1 Row</b> ( <i>High Intensity Barlight</i> )	12
<b>HBL3 Series 2 Row</b> ( <i>High Intensity Barlight</i> )	13
<b>HLBD3 Series</b> ( <i>Diffused Tube Light</i> )	14
<b>HBLP Series - IP65</b> ( <i>High Power Bar Light</i> )	15
<b>HLSW Series</b> ( <i>High Intensity Ring Light</i> )	16
<b>HLSWP Series - IP65</b> ( <i>High Intensity Ring Light</i> )	17
<b>MLSW Series</b> ( <i>Direct Ring Light</i> )	18
<b>HSBT2 Series</b> ( <i>Spotlight</i> )	19
<b>MLLA Series</b> ( <i>Direct Low Angle Light</i> )	20
<b>HIDS Series</b> ( <i>Indirect Dome Light</i> ) & <b>HDLR Series</b> ( <i>Dark Field Angular Light</i> )	21
<b>HDLQ Series</b> ( <i>Dark Field Square Light</i> ) & <b>HIDQ Series</b> ( <i>Indirect Square Light</i> )	22
<b>MCAX Series</b> ( <i>High Intensity Coaxial Light</i> )	23
<b>HCASP Series (IP65)</b> ( <i>High Intensity Coaxial Light</i> )	24
<b>SD Series</b> ( <i>Analog LED Light Controller</i> )	25
<b>SDP Series</b> ( <i>Button LED Light Controller</i> )	26
<b>SDA Series</b> ( <i>Digital LED Light Controller</i> )	27
<b>Camera &amp; Lighting Mounting Solution Kit</b> ( <i>VL-DK-CM-XXX-V1</i> )	28
<b>Lighting Demo Kit</b> ( <i>VL-LIGHTING-V1</i> )	29
<b>IP Enclosure</b>	30
<b>IP Enclosure - Camera Compatibility</b>	31
<b>IP Enclosure - Dimension 080, 100</b>	32
<b>IP Enclosure - Dimension 130</b>	33
<b>Lighting for IP Enclosure 080, 100</b>	34
<b>Lighting for IP Enclosure 130</b>	35
<b>IP Enclosure - Lens</b>	36
<b>Cable Clamp for IP Enclosure - Dimension 080, 100</b>	37
<b>Cable Clamp for IP Enclosure - Dimension 130</b>	38
<b>Accessories Bracket</b>	39
<b>Optional Diffuser</b>	41
<b>Optional Polarizer</b>	42
<b>3 Years Warranty</b>	43
<b>Online Customization</b>	44

# PRODUCT PART NUMBERS

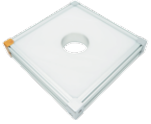
All lighting part numbers follow the same naming convention as per the diagram



**Back Light**  
HBBX Series



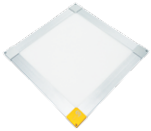
**Back Light**  
HBBC Series



**Front Light**  
HBBQ Series



**Front Light**  
HBQ3 / HBQ3 Series



**Thin Back Light**  
BHD2 Series



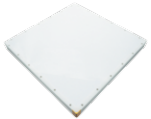
**Bar Light**  
HBL3 Series



**Thin Front Light**  
BHDQ2 Series



**Tube Light**  
HLBD3 Series



**Back Light**  
HBAX Series



**(IP Series) Bar Light**  
HBLP Series



**Front Light**  
HBAQ Series



**(IP Series)  
IP Enclosure**  
IP Enclosure Series



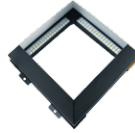
**Ring Light**  
HLSW Series

# PRODUCT PART NUMBERS

All lighting part numbers follow the same naming convention as per the diagram



**(IP Series) Ring Light**  
HLWSP Series



**Indirect Half Square**  
HDLQ Series



**Ring Light**  
MLSW Series



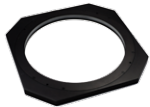
**Coaxial Light**  
MCAX Series



**Spotlight**  
HSBT2 Series



**(IP Series) High Power Coaxial**  
HCASP Series



**Low Angle Light**  
MLLA Series



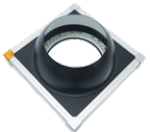
**Controller**  
SD Series / SDA Series / SDP Series



**Indirect Dome**  
HIDS Series



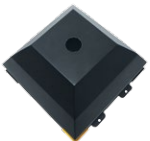
**Lighting Demo Kit**  
VL-LIGHTING-V1



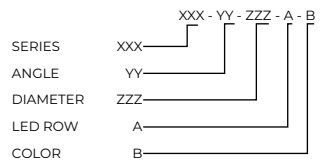
**Indirect Half Dome**  
HDLR Series



**Camera & Lighting Mounting Solution Kit**  
VL-DK-CM-XXX-V1

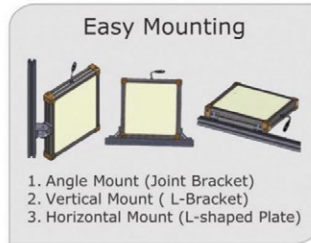
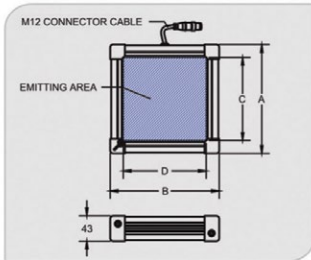
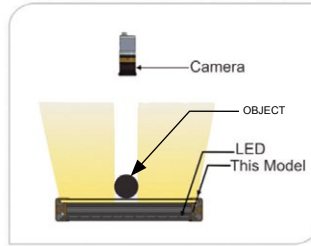


**Indirect Square**  
HIDQ Series



## HBBX SERIES - High Intensity Backlight

HBBX series provides diffused back lighting over a wide area. The LEDs are arranged in a dense array and shine into a diffuser. This product is able to be cascaded based on its PCB size (80mm x 80mm).



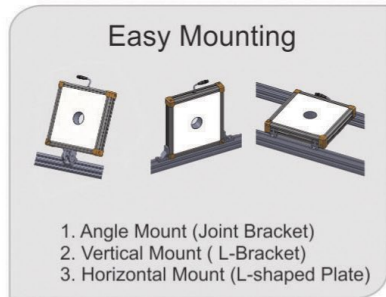
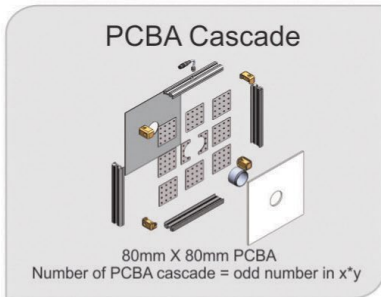
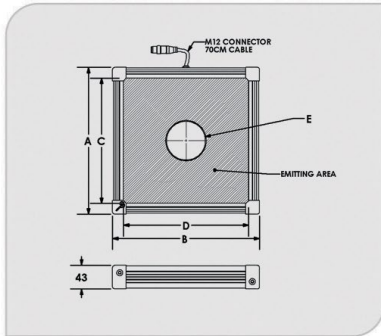
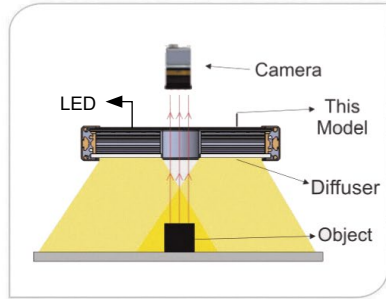
MODEL	DIMENSIONS (MM)				COLOR	VOLTAGE / WATT	CURRENT	WEIGHT (g)
	A	B	C	D				
HBBX-00-160X160-X	186.2	186.2	147	147	••○	24V / 11.52W 24V / 12.00W	480mA 500mA	1170
HBBX-00-160X240-X	186.2	266.2	147	227	••○	24V / 17.28W 24V / 18.00W	720mA 750mA	1500
HBBX-00-160X320-X	186.2	346.2	147	307	••○	24V / 23.04W 24V / 24.00W	960mA 1000mA	1870
HBBX-00-240X240-X	266.2	266.2	227	227	••○	24V / 25.92W 24V / 27.00W	1080mA 1125mA	1900
HBBX-00-240X320-X	266.2	346.2	227	307	••○	24V / 34.56W 24V / 36.00W	1440mA 1500mA	2280
HBBX-00-320X320-X	346.2	346.2	307	307	••○	24V / 46.08W 24V / 48W	1920mA 2000mA	2880
HBBX-00-400X240-X -RGBW-24V	426	266	387	227	• • • ○	24V / 57.96W 24V / 63.00W 24V / 50.40W 24V / 57.96W	2415mA 2625mA 2100mA 2415mA	3000



\*\*It is not recommended to light on the RED, GREEN, BLUE, WHITE (RGBW) LEDs at the same time.

## HBBQ SERIES – Front Light with Center Hole

HBBQ series is a high intensity, diffused front light which is suitable for applications that involve wide field of view and requires uniform lighting. This product is able to be cascaded based on its 80mm x 80mm PCB size.



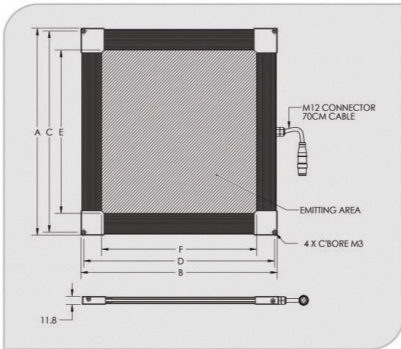
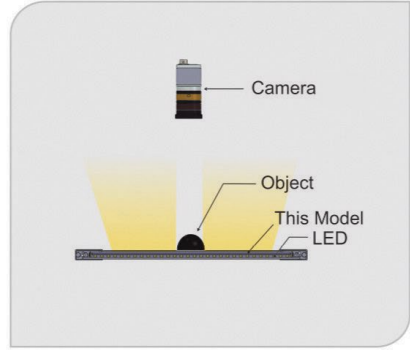
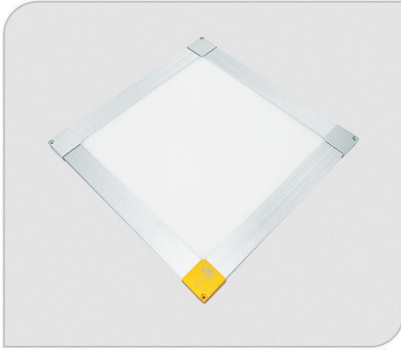
MODEL	DIMENSIONS (MM)					COLOR	VOLTAGE / WATT		CURRENT	WEIGHT (g)
	A	B	C	D	EØ		24V /	24V /		
HBBQ-00-240X240-X-24V	266.2	266.2	227	227	50	••••	24V / 25.92W 24V / 26.40W	1080mA 1100mA	1970	
HBBQ-00-240X240-X-RG-BW-24V	266.2	266.2	227	227	70.2	••••	24V / 19.32W 24V / 21.00W 24V / 16.80W 24V / 19.32W	805mA 875mA 700mA 805mA	2000	



\*\*It is not recommended to light on the RED, GREEN, BLUE, WHITE (RGBW) LEDs at the same time.

## BHD2 SERIES – Thin Backlight

BHD2 series consists of a four-sided illumination fit into a diffuser block in which light shines from the flat surface of the block.



M12  
Male Connector



M12  
Pin Assignment

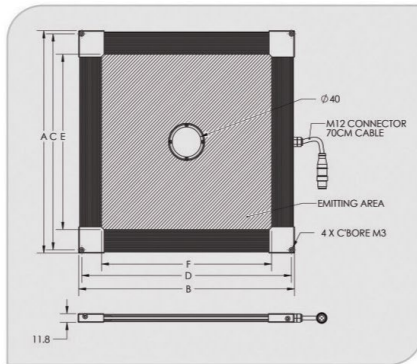
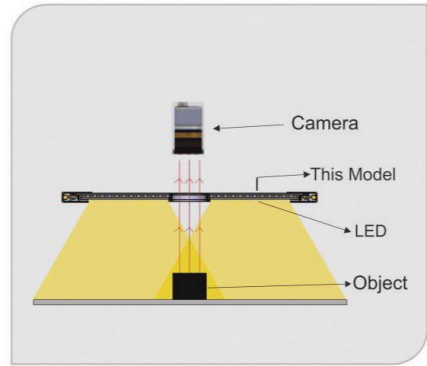


PIN 1	BROWN	24V
PIN 2	WHITE	-
PIN 3	BLUE	GND
PIN 4	BLACK	-
PIN 5	GRAY	-

MODEL	DIMENSIONS (MM)						COLOR	VOLTAGE / WATT	CURRENT	WEIGHT (g)
	A	B	C	D	E	F				
BHD2-00-235X235-1	298	298	289.60	289.60	235	235	•••○	24V / 14.40W 24V / 14.40W	600mA 600mA	1620
BHD2-00-545X545-1	607.4	607.4	599	599	545	545	•••○	24V / 34.56W 24V / 34.56W	1440mA 1440mA	4800

## BHDQ2 SERIES – Thin Front Light with Center

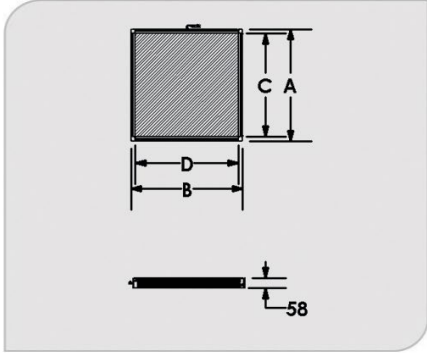
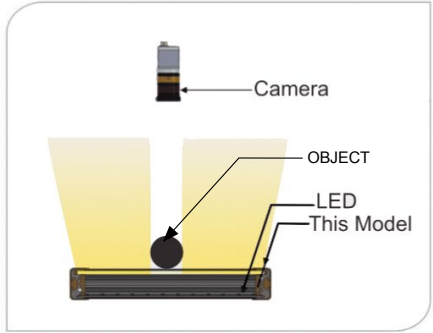
BHDQ2 series is a side-emitting diffused front light which is suitable for applications that involve wide field of view and require uniform illumination.



MODEL	DIMENSIONS (MM)						COLOR	VOLTAGE / WATT	CURRENT	WEIGHT (g)
	A	B	C	D	E	F				
BHDQ2-00-235X235-1	298	298	289.60	289.60	235	235	••○	24V / 14.40W 24V / 14.40W	600mA 600mA	1620
BHDQ2-00-545X545-1	607.4	607.4	599	599	545	545	••○	24V / 34.56W 24V / 34.56W	1440mA 1440mA	4800

## HBAX SERIES – High Intensity Backlight

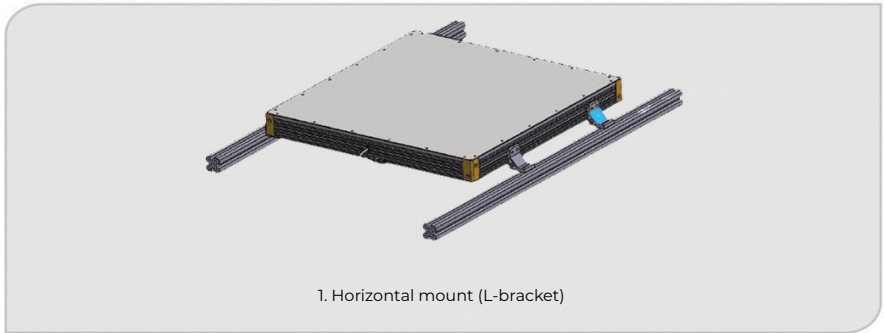
HBAX series is a cascaded diffused backlight, covering a wide field of view. This product is able to cascade for sizes larger than 560mm to the max of 12m.



M12 Male Connector

M12 Pin Assignment

PIN 1	BROWN	24V
PIN 2	WHITE	-
PIN 3	BLUE	GND
PIN 4	BLACK	-
PIN 5	GRAY	-



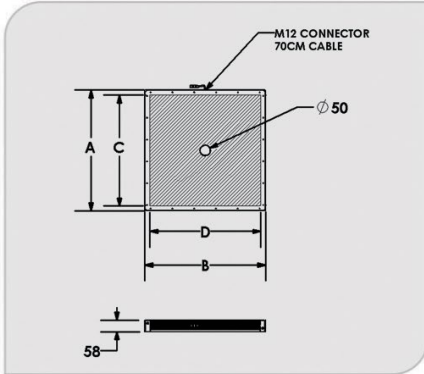
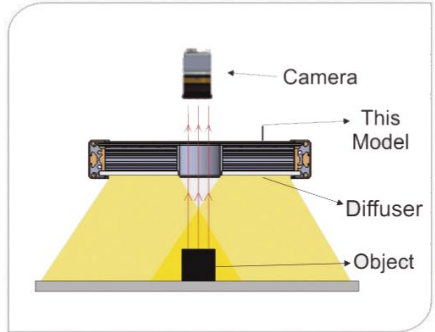
MODEL	DIMENSIONS (MM)				COLOR	VOLTAGE / WATT	CURRENT	WEIGHT (g)
	A	B	C	D				
HBAX-00-560X560-X-24V	610	610	560	560	IR860	24V / 141.12W 24V / 211.68W	5880mA 8820mA	10000
HBAX-00-600X600-X-24V	650	650	600	600	IR860	24V / 141.12W 24V / 211.68W	5880mA 8820mA	15000



## HBAQ SERIES – High Intensity Front Light with Center Hole



HBAQ series is a cascaded diffused front light, covering a wide field of view. This product is able to cascade for sizes larger than 560mm to the max of 12m.



M12 Male Connector

M12 Pin Assignment

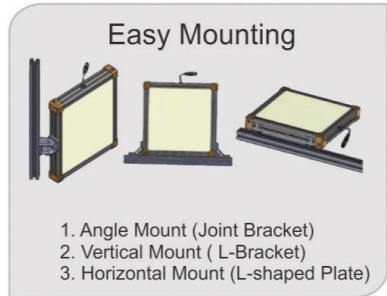
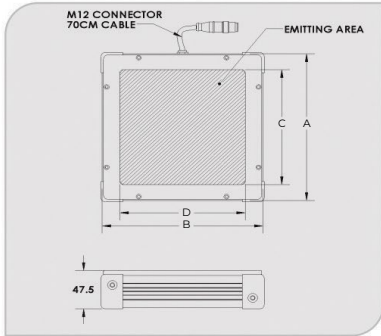
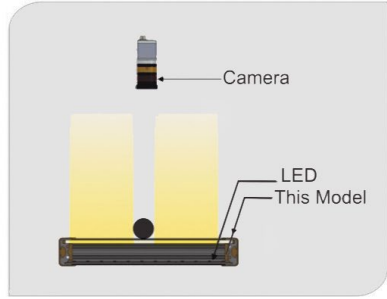
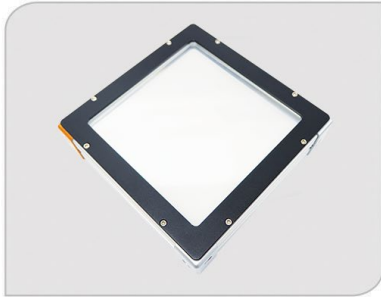
PIN 1	BROWN	24V
PIN 2	WHITE	-
PIN 3	BLUE	GND
PIN 4	BLACK	-
PIN 5	GRAY	-



MODEL	DIMENSIONS (MM)				COLOR	VOLTAGE / WATT	CURRENT	WEIGHT (g)
	A	B	C	D				
HBAQ-00-560X560-X-24V	610	610	560	560	IR860	24V / 138.24W 24V / 207.36W	5760mA 8640mA	10000

## HBBC SERIES – High Intensity Collimated Backlight

HBBC Series is a collimated backlight which LEDs are arranged in a dense array and shine into a diffuser, producing uniform area illumination which makes it suitable for measurement applications.



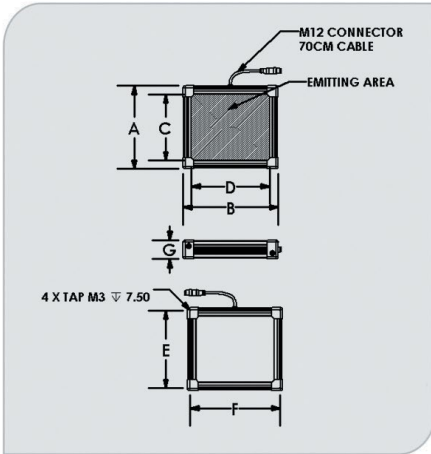
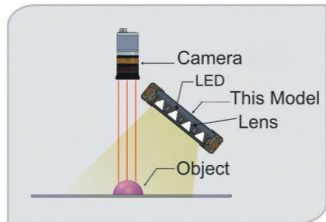
MODEL	DIMENSIONS (MM)				COLOR	VOLTAGE / WATT	CURRENT	WEIGHT (g)
	A	B	C	D				
HBBC-00-160X160-X-24V	186	186	143	143	••○	24V / 11.52W 24V / 12.00W 24V / 15.46W	480mA 500mA 644mA	1380
HBBC-00-160X160-X-RG-BW-24V	186	186	143	143	••○	24V / 16.80W 24V / 13.44W 24V / 15.46W	700mA 560mA 644mA	1380



\*\*It is not recommended to light on the RED, GREEN, BLUE, WHITE (RGBW) LEDs at the same time.

## HBQ3 SERIES – High Power Front Light

HBQ3 series is a high power square spot illumination which is suitable for applications that require high intensity illumination.



M12 Male Connector

M12 Pin Assignment

PIN 1	BROWN	24V
PIN 2	WHITE	-
PIN 3	BLUE	GND
PIN 4	BLACK	-
PIN 5	GRAY	-

### Features

### Easy mounting

- 1.Angle Mount (Joint Bracket)
- 2.Vertical Mount (L-Bracket)
- 3.Horizontal Mount (L-shaped Plate)

MODEL	DIMENSIONS (MM)							COLOR	VOLTAGE / WATT	CURRENT	WEIGHT (g)
	A	B	C	D	E	F	G				
HBQ3-00-100-3-X-24V	143	117	104	78	131	105	31		24V / 6.72W	280mA	800
									24V / 5.04W	210mA	
									24V / 7.20W	300mA	
									24V / 4.80W	200mA	
HBQ3-00-160-6-X-24V	197	197	158	158	185	185	31		24V / 20.16W	840mA	1500
									24V / 14.64W	610mA	
									24V / 21.60W	900mA	
									24V / 14.40W	600mA	
HBQ3-00-152X180-X-RGBW-24V	190.8	218.8	152	180	190.8	218.8	43		24V / 24w	1000mA	1600
									24V / 24w	1000mA	
									24V / 24w	1000mA	
									24V / 24w	1000mA	



\*\*It is not recommended to light on the RED, GREEN, BLUE, WHITE (RGBW) LEDs at the same time.

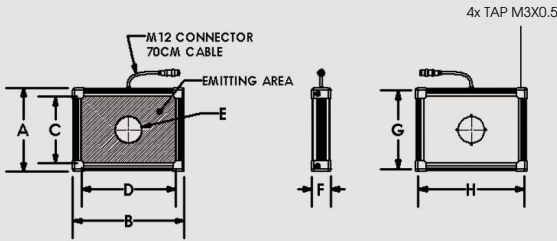
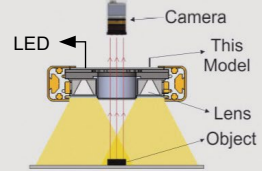
## HBR3 SERIES – High Power Front Light with Center Hole

HBR3 series is a high power square spot illumination with a center hole which is suitable for applications that require high intensity illumination.

Single Color / IR860

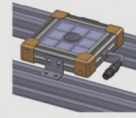
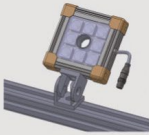


UV365



Feature

### Easy Mounting



1. Angle Mount (Joint Bracket)
2. Vertical Mount (L-Bracket)
3. Horizontal Mount (L-shaped Plate)

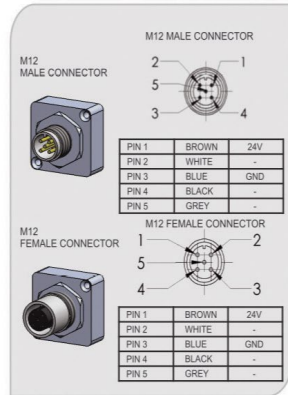
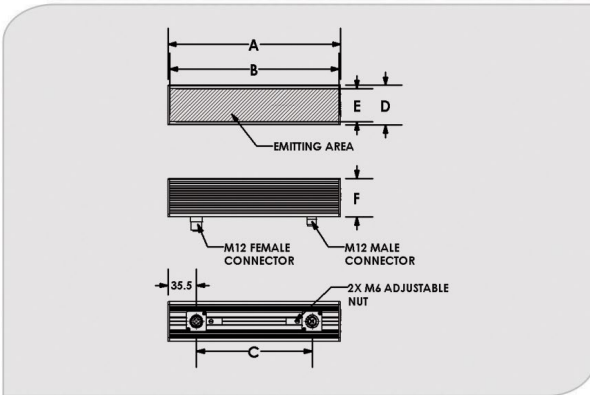
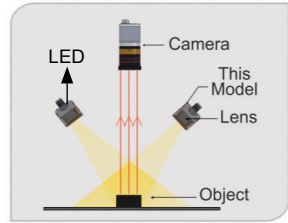
MODEL	DIMENSIONS (MM)								COLOR	VOLTAGE / WATT	CURRENT	WEIGHT (g)
	A	B	C	D	E $\varnothing$	F	G	H				
HBR3-00-090-X-24V	123	123	84	84	34	31	111	111	••	24V / 5.04W	210mA	650
									••	24V / 5.52W	230mA	
									••	24V / 14.64W	610mA	
HBR3-00-160-X-24V	173	173	134	134	34	31	161	161	••	24V / 9.60W	400mA	1105
									••	24V / 8.16W	340mA	
									••	24V / 30.00W	1250mA	
HBR3-00-190-X-24V	223	223	184	184	74	31	211	211	••	24V / 16.90W	704mA	1600
									••	24V / 16.32W	680mA	
HBR3-00-152X216-X- RGBW-24V	190.8	254.8	152	216	60	43	190.8	254.8	••	24V / 24.24W	1010mA	1600
									••	24V / 25.68W	1070mA	
									••	24V / 25.92W	1080mA	
									••	24V / 26.88W	1120mA	



\*\*It is not recommended to light on the RED, GREEN, BLUE, WHITE (RGBW) LEDs at the same time.

# HBL3 Series 1 Row- High Intensity Barlight

HBL3 is a high power bar illumination which is suitable for applications that require high intensity illumination.



## Features



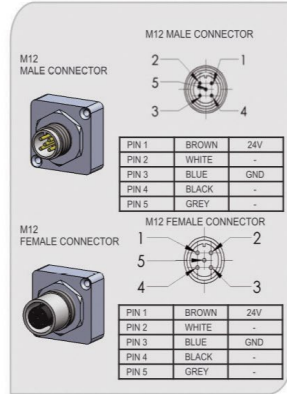
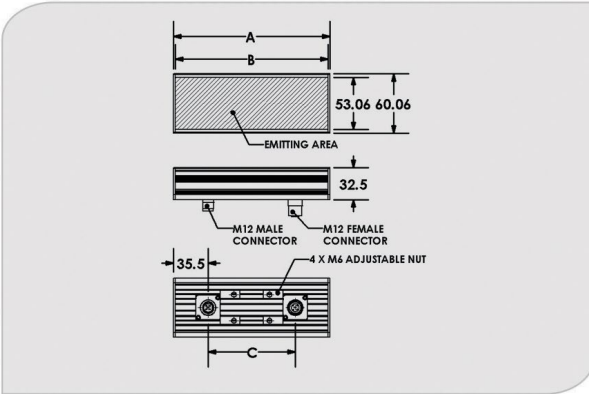
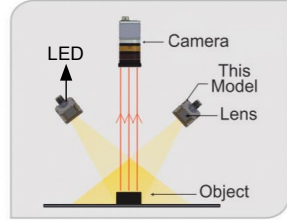
MODEL	DIMENSIONS (MM)					COLOR	VOLTAGE / WATT	CURRENT	WEIGHT (g)
	A	B	C	D	E				
HBL3-00-160-1-X-24V	160	156	89	33.4	26.4	32.5	24V / 3.84W	160mA	270
							24V / 3.84W	160mA	
							24V / 4.80W	200mA	
							24V / 2.88W	120mA	
HBL3-00-320-1-X-24V	320	316	249	33.4	26.4	32.5	24V / 7.68W	320mA	500
							24V / 7.68W	320mA	
							24V / 9.60W	400mA	
							24V / 5.76W	240mA	
HBL3-00-200-1-RG-BW-24V	216	212	144.5	49.1	41	47.4	24V / 7.2W	300mA	560
							24V / 7.2W	300mA	
							24V / 7.2W	300mA	
							24V / 7.2W	300mA	



\*\*It is not recommended to light on the RED, GREEN, BLUE, WHITE (RGBW) LEDs at the same time

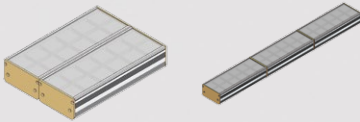
## HBL3 SERIES 2 Row – High Intensity Barlight

HBL3 is a high power bar illumination which is suitable for applications that require high intensity illumination.

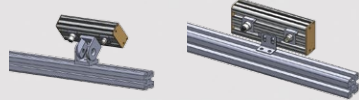


### Features

#### Cascade Illuminators



#### Easy Mounting

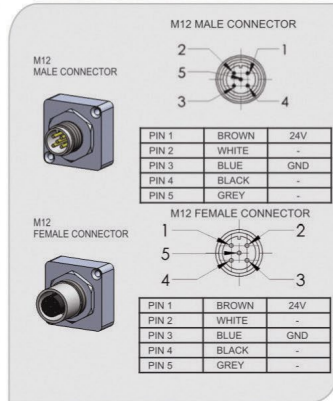
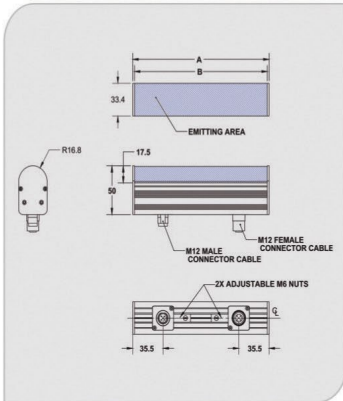
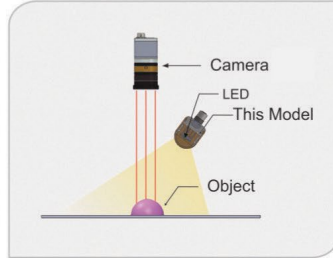


- 1.Angle Mount (Joint Bracket)
- 2.Horizontal Mount (L-shaped Plate)

MODEL	DIMENSIONS (MM)			COLOR	VOLTAGE / WATT	CURRENT	WEIGHT (g)
	A	B	C				
HBL3-00-160-2-X-24V	160	156	89	 IR860 UV365	24V / 7.68W	320mA	600
					24V / 7.68W	320mA	
					24V / 9.6W	400mA	
					24V / 5.76W	240mA	

## HLBD3 Series – Diffused Tube Light

HLBD3 series is a high power, wide angled light tube which provides an intense diffused light with uniform distribution.



### Features



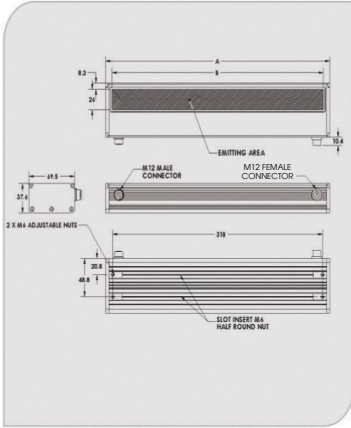
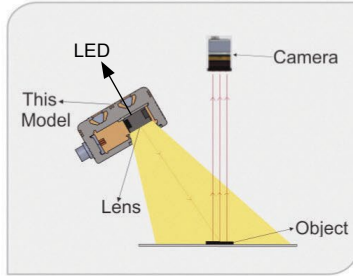
MODEL	DIMENSIONS (MM)		COLOR	VOLTAGE / WATT	CURRENT	WEIGHT (g)
	A	B				
HLBD3-00-160-1	160	156	● ● ○	24V / 4.68W 24V / 4.90W	195mA 204mA	320
HLBD3-00-320-1	316	312	● ● ○	24V / 9.36W 24V / 9.80W	390mA 408mA	515
HLBD3-00-480-1	472	468	● ● ○	24V / 14.04W 24V / 14.69W	585mA 612mA	748
HLBD3-00-160-1-RGBW	160	156	● ● ○ ○	24V / 4.32W 24V / 4.32W 24V / 4.32W	180mA 180mA 180mA	320



\*\*It is not recommended to light on the RED, GREEN, BLUE, WHITE (RGBW) LEDs at the same time

## HBLP SERIES (IP65) – High Power Bar Light

HBLP series is a high power bar illumination with IP65 rating that is suitable for applications that require high intensity illumination.

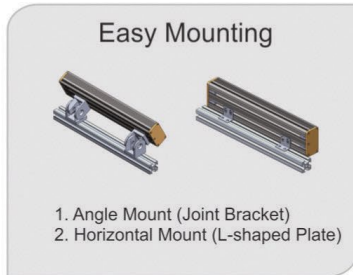


**M12 MALE CONNECTOR**

PIN 1	BROWN	24V
PIN 2	WHITE	TRIGGER +
PIN 3	BLUE	GND
PIN 4	BLACK	TRIGGER -
PIN 5	GREY	-

**M12 FEMALE CONNECTOR**

PIN 1	BROWN	24V
PIN 2	WHITE	TRIGGER +
PIN 3	BLUE	GND
PIN 4	BLACK	TRIGGER -
PIN 5	GREY	-



MODEL	DIMENSIONS (MM)		COLOR	VOLTAGE / WATT	CURRENT	WEIGHT (g)
	A	B				
HBLP-00-320-1-X	340	320	•••	24V / 7.68W 24V / 7.68W	320mA 320mA	1050

## HLSW Series – High Intensity Ring Light

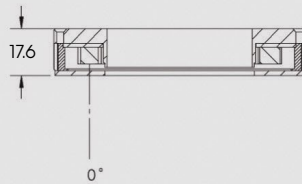
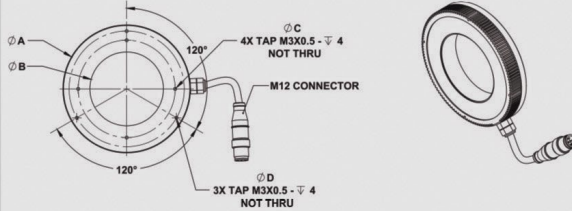
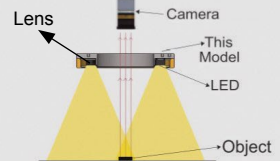
HLSW series is a ring shaped illuminator that produces light with high intensity, which makes it suitable for a wide range of applications.



HLSW Single Row



HLSW Double Row



MODEL	DIMENSIONS (MM)				COLOR	VOLTAGE / WATT	CURRENT	WEIGHT (g)
	ØA	ØB	ØC	ØD				
HLSW-00-050-1-X	56	24	31	35	•••○	24V / 3.24W 24V / 3.24W	135mA 135mA	110
HLSW-00-080-1-X	81	36.4	54	56	•••○	24V / 5.40W 24V / 5.40W	225mA 225mA	165
HLSW-00-100-1-X	105.2	60.7	80	95	•••○	24V / 7.56W 24V / 7.56W	315mA 315mA	220
HLSW-00-130-1-X	131.6	87	95	106	•••○	24V / 10.80W 24V / 10.80W	450mA 450mA	240
HLSW-00-100-2-X	105.2	40.7	80	95	•••○	24V / 11.52W 24V / 11.52W	480mA 480mA	260
HLSW-00-130-2-X	131.6	67	95	106	•••○	24V / 14.88W 24V / 14.88W	620mA 620mA	295

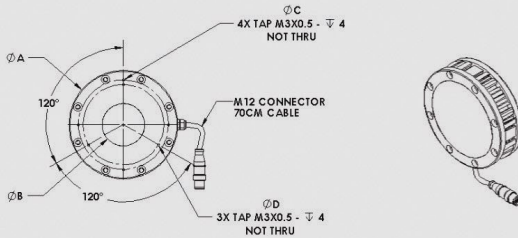
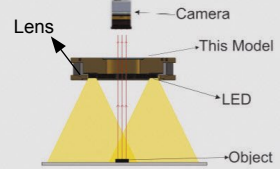
## HLSWP SERIES (IP65) – High Intensity Ring Light

HLSWP series is a ring shaped illuminator with IP65 rating that produces light with high intensity, which makes it suitable for a wide range of applications.

HLSWP Single Row



HLSWP Double Row

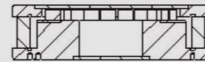
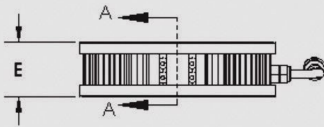


M12 Male Connector



M12 Pin Assignment

PIN 1	BROWN	24V
PIN 2	WHITE	-
PIN 3	BLUE	GND
PIN 4	BLACK	-
PIN 5	GRAY	-



SECTION A-A  
SCALE 1 : 3

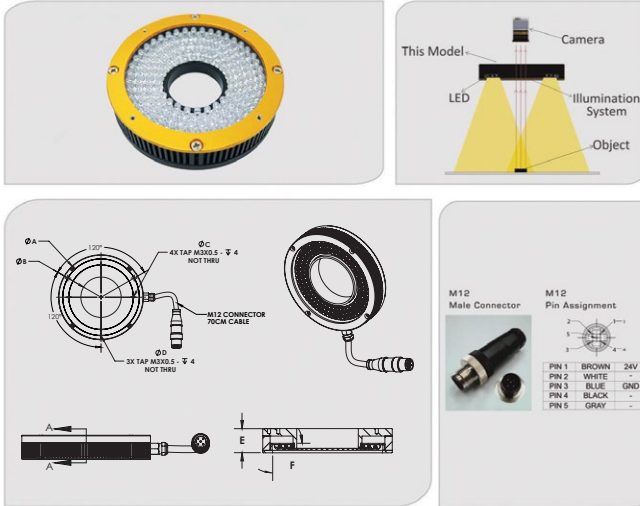
MODEL	DIMENSIONS (MM)				E	COLOR	VOLTAGE / WATT	CURRENT	WEIGHT (g)
	ØA	ØB	ØC	ØD					
HLSWP-00-100-1-X	128	50	106	95	36	•••○	24V / 7.56W	315mA	875
HLSWP-00-100-2-X	128	50	106	95	36	•••○	24V / 11.52W	480mA	886
						••○•	24V / 11.52W	480mA	

## MLSW SERIES – Direct Ring Light

LED arrays are arranged such that the light arrays are concentrated to a spot for extreme bright light. Using a flexible PCB board, the product quality and efficiency could be improved as flexible boards are able to achieve optimized angle with variations of outer and inner diameter to target a work piece



Applications: Substrate Inspection, Label Inspection, Flat Surface Inspection, Fiducial Recognition

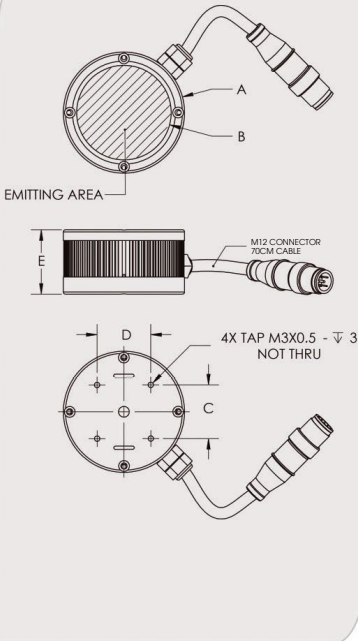
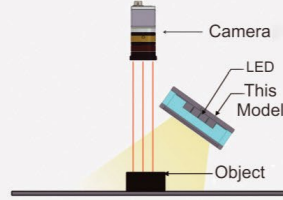


MODEL	DIMENSIONS (MM)					F	COLOR	VOLTAGE / WATT	CURRENT	WEIGHT (g)
	ØA	ØB	ØC	ØD	ØE					
MLSW-00-050-2-X-24V	56	16	25	35	19.5	0	••○ 24V / 1.4W 24V / 2.0W	60mA 84mA	117	
MLSW-00-080-4-X-24V	81	25.7	54	56	19.5	0	••○ 24V / 4.9W 24V / 6.3W	204mA 264mA	178	
MLSW-00-100-4-X-24V	105.2	50	80	95	19.5	0	••○ 24V / 7.2W 24V / 9.8W	300mA 408mA	242	
MLSW-00-130-6-X-24V	131.8	56	106	95	19.5	0	••○ 24V / 13.5W 24V / 18.1W	564mA 756mA	341	
MLSW-15-050-2-X-24V	56.3	12.3	25	35	18.5	15	••○ 24V / 1.4W 24V / 2.0W	60mA 84mA	110	
MLSW-15-080-4-X-24V	81.3	27	54	56	18.5	15	••○ 24V / 4.9W 24V / 6.3W	204mA 264mA	160	
MLSW-15-100-4-X-24V	105.2	45.6	80	95	18.5	15	••○ 24V / 7.2W 24V / 9.8W	300mA 408mA	205	
MLSW-15-130-6-X-24V	131.8	54.3	106	95	18.5	15	••○ 24V / 13.5W 24V / 18.1W	564mA 756mA	274	
MLSW-30-050-2-X-24V	56.3	15	25	35	19.5	30	••○ 24V / 1.4W 24V / 2.0W	60mA 84mA	113	
MLSW-30-080-4-X-24V	81.3	22.8	54	56	19.5	30	••○ 24V / 4.9W 24V / 6.3W	204mA 264mA	169	
MLSW-30-100-4-X-24V	105.2	49	80	95	19.5	30	••○ 24V / 7.2W 24V / 9.8W	300mA 372mA	219	
MLSW-30-130-6-X-24V	131.8	59.5	106	95	24	30	••○ 24V / 13.5W 24V / 18.1W	564mA 756mA	332	
MLSW-45-050-2-X-24V	56.3	19	25	35	19.5	45	••○ 24V / 1.7W 24V / 2.0W	72mA 84mA	110	
MLSW-45-080-4-X-24V	81.3	29.5	54	56	24	45	••○ 24V / 5.2W 24V / 5.8W	210mA 240mA	178	
MLSW-45-100-5-X-24V	105.2	50	80	95	26	45	••○ 24V / 8.9W 24V / 10.7W	372mA 444mA	245	
MLSW-45-130-6-X-24V	131.8	67.8	106	95	31	45	••○ 24V / 13.2W 24V / 17.6W	552mA 732mA	358	

## HSBT2 Series - Spotlight Illumination

HSBT2 Series is a high power angular illumination to provide application that requires high intensity illumination.

### Single Color / IR860



M12  
Male Connector

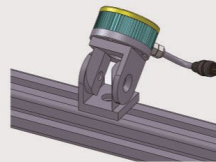
M12  
Pin Assignment



PIN 1	BROWN	24V
PIN 2	WHITE	-
PIN 3	BLUE	GND
PIN 4	BLACK	-
PIN 5	GRAY	-

### Feature

### Easy Mounting



Joint Bracket

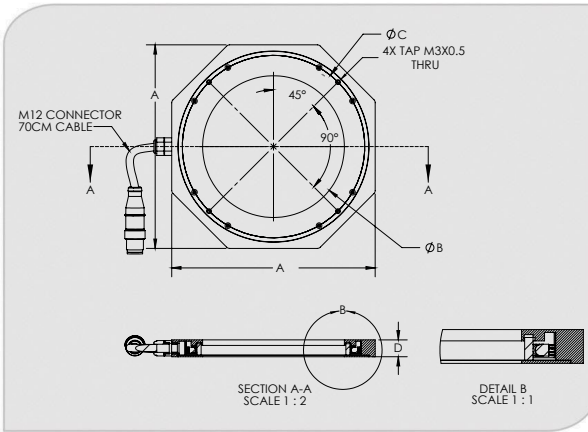
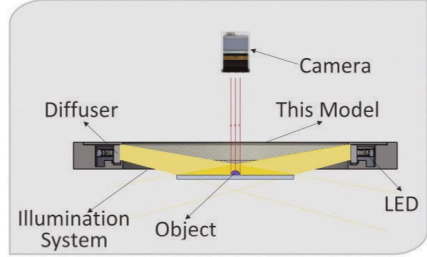
MODEL	DIMENSIONS (MM)					COLOR	VOLTAGE / WATT	CURRENT	WEIGHT (g)
	ØA	ØB	C	D	E				
HSBT2-00-060-X	56.4	44	25	25	29	 IR860	24V / 3.60W	150mA	145
							24V / 3.60W	150mA	
							24V / 4.32W	180mA	
HSBT2-00-080-X	81.4	69	25	25	29	 IR860	24V / 7.20W	300mA	220
							24V / 7.20W	300mA	
							24V / 4.80W	200mA	

## MLLA SERIES – Direct Low Angle Light

LED arrays are arranged in low angle to provide side illumination. MLLA series is available in 1 row to suit for different brightness requirements.



Applications: Edge Detection, Scratch on Metal and Glossy Surfaces.



M12 Male Connector



M12 Pin Assignment

PIN 1	BROWN	24V
PIN 2	WHITE	-
PIN 3	BLUE	GND
PIN 4	BLACK	-
PIN 5	GRAY	-

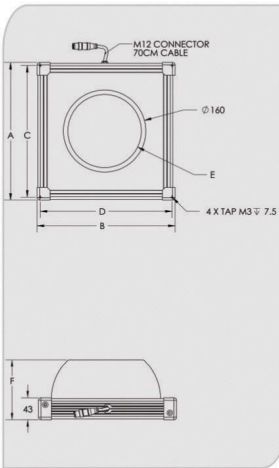
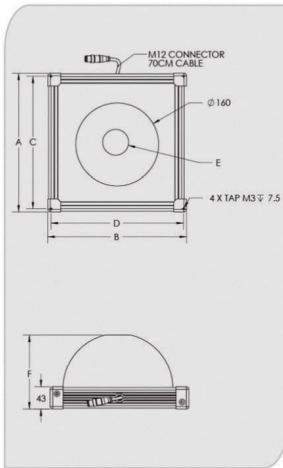
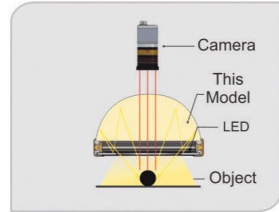
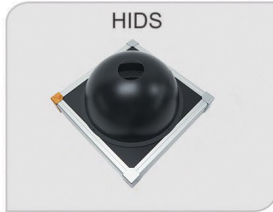
MODEL	DIMENSIONS (MM)				COLOR	VOLTAGE / WATT	CURRENT	WEIGHT (g)
	A	ØB	ØC	D				
MLLA-90-130-1-X	145	101	130	12	••○	24V / 5.04W 24V / 6.72W	210mA 280mA	265
MLLA-90-170-1-X	184	140	169	12	••○	24V / 6.72W 24V / 7.68W	280mA 320mA	412
MLLA-90-200-1-X	223	179	208	12	••○	24V / 6.72W 24V / 10.32W	280mA 430mA	573

## HIDS SERIES – Indirect Dome Light

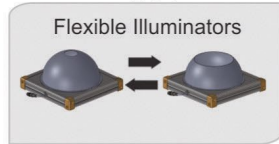
HIDS series shines from a conical surface providing illumination from all angles, allowing inspection images to be created without shadows.

## HDLR SERIES – Dark Field Angular Light

HDLR series is an illuminator with LEDs arranged in a single row. This illumination provides a dark field effect which enables it to illuminate surfaces and inspect for scratches and pits.



### Feature



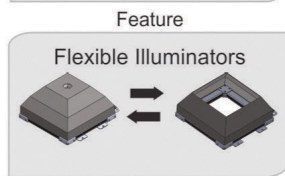
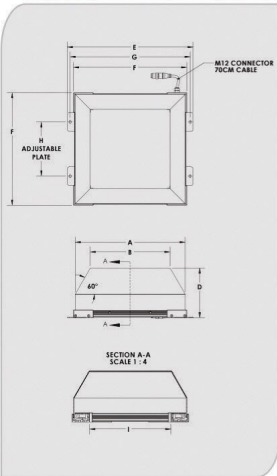
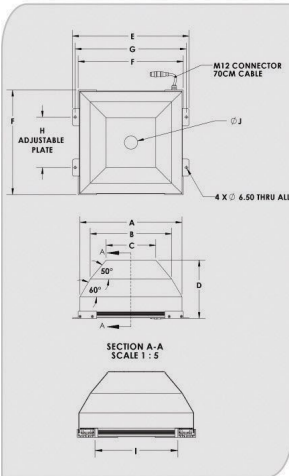
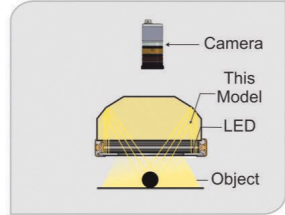
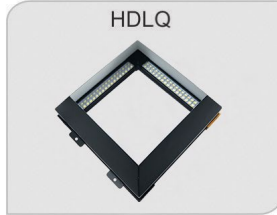
MODEL	DIMENSIONS (MM)						COLOR	VOLTAGE / WATT	CURRENT	WEIGHT (g)
	A	B	C	D	ØE	F				
HIDS-00-200-X	268	268	256	256	Ø50	143.6	••○	24V / 18.72W 24V / 17.47W	780mA 728mA	2160
HDLR-00-200-X	268	268	256	256	Ø142.6	117.4	••○	24V / 18.72W 24V / 17.47W	780mA 728mA	2070

## HDLQ SERIES – Dark Field Square Light

HDLQ series is a dark field illumination that is suitable for detecting edges and contours without producing shadows.

## HIDQ SERIES – Indirect Square Light

HIDQ series provides uniform and diffused illumination over a square area, providing excellent illumination for square and rectangular objects.

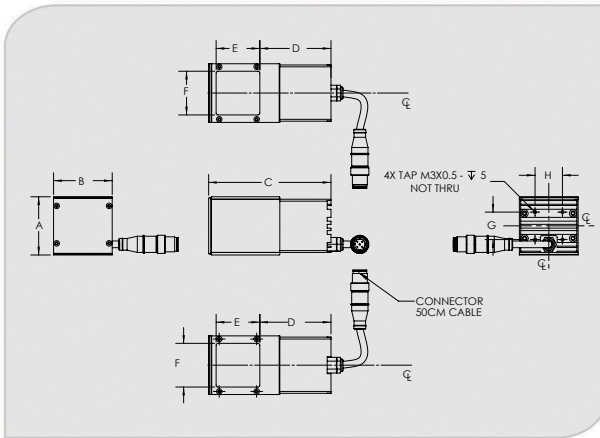
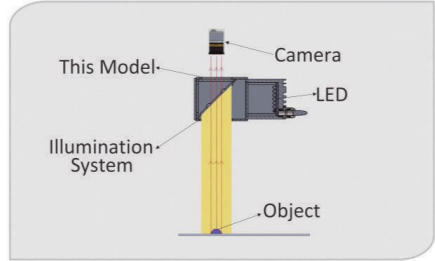


MODEL	DIMENSIONS (MM)										COLOR	VOLTAGE / WATT	CURRENT	WEIGHT (g)
	A	B	C	D	E	F	G	H	I	J				
HIDQ-00-190-X	270	215.7	131.2	154.8	308.4	278	294.4	134	194	$\varnothing$ 35	● ● ●	24V / 25.90W 24V / 23.00W	1080mA 960mA	2370
HDLQ-00-190-X	270	195.7	-	122.7	309.2	278	295.2	134	194	-	● ● ●	24V / 25.9W 24V / 23.04W	1080mA 960mA	2160

## MCAX SERIES – High Intensity Coaxial Light

MCAX series provides high intensity coaxial illumination for applications that use telecentric lenses. The light is reflected by 45 degrees half mirror to provide light in line with the camera.

Applications: Surface Inspection and Alignment, Wafer and Metal Surface Inspection, Film, LCD and Glass & Pattern on PCB Inspection.



M12 Male Connector



M12 Pin Assignment

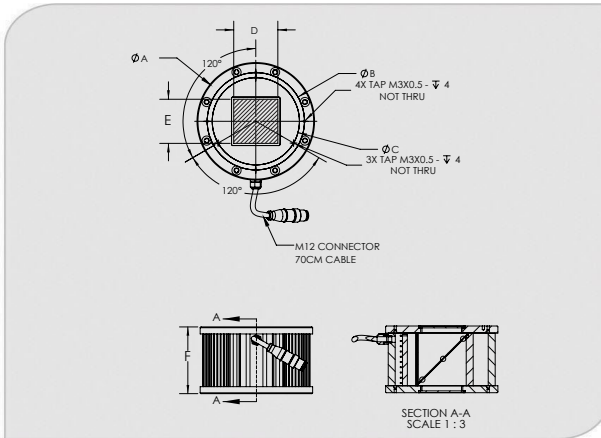
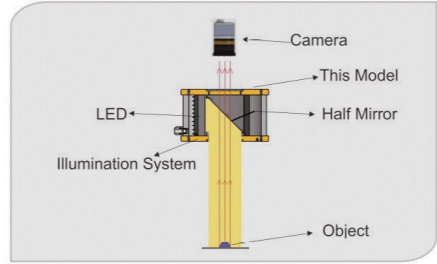
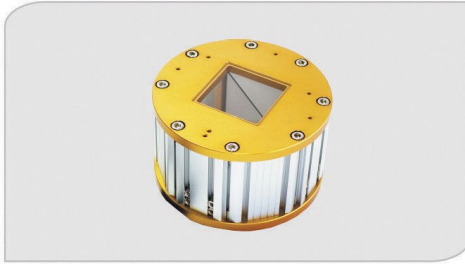


PIN 1	BROWN	24V
PIN 2	WHITE	-
PIN 3	BLUE	GND
PIN 4	BLACK	-
PIN 5	GRAY	-

MODEL	DIMENSIONS (MM)								COLOR	VOLTAGE / WATT	CURRENT	WEIGHT (g)
	A	B	C	D	E	F	G	H				
MCAX-00-035-X-X	46.6	47	98	57	35	35	22	22	••○	24V / 2.88W 24V / 3.84W	120mA 160mA	269
MCAX-00-070-X-X	76.5	77.5	128	57	65	65	52	22	••○	24V / 7.92W 24V / 13.20W	330mA 550mA	580

## HCASP SERIES (IP65) – High Intensity Coaxial

HCASP series is a coaxial illumination with IP65 that emits light with high intensity on the same axis as the camera and lens. The light is reflected by 45 degrees half mirror to provide light in line with the camera.



MODEL	DIMENSIONS (MM)						COLOR	VOLTAGE / WATT	CURRENT	WEIGHT (g)
	ØA	ØB	ØC	D	E	F				
HCASP-00-040-X-24V	128	106	95	48	48	76	●●●	24V / 12.96W 24V / 13.68W	540mA 570mA	1103



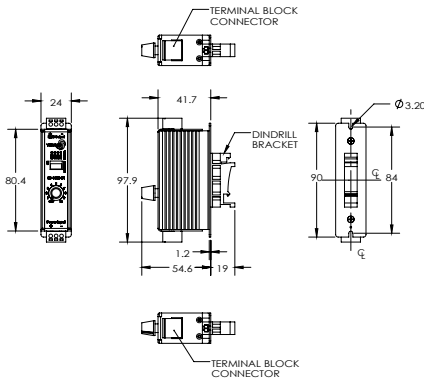
## SD-1000-D1

**Dimension:** 97.9 x 24 x 73.6 (mm)

**Weight:** 140g

## Specifications

- **Intensity Control:**  
VR Adjustable  
1 – 10 Step Intensity Range
- **Controller Supply Voltages:**  
24VDC, Min 2.2A
- **Controller Light Output:**  
24VDC / Max 2.0A
- **Current Output Selection:**  
200mA - 2000mA



## Features

- Small and Compact Size
- Single Channel Light Controller
- Analog Controller - VR adjustable  
Knob is used to control the lighting Intensity
- Controller Output Current Selection (Dipswitch) to set current limit and prolong the lifespan of the lights.

## SDP SERIES - LED Light Controller

The SDP controller provides continuous intensity to LED lighting for machine vision applications. It automatically detects the operating current of the LED light (Current Sense) and can generate output pulses at as high as 3 times of the operating current



### SDP-CH1-A1-M12

#### Dimension:

- 154.3 x 50.5 x 72.2 (mm)

**Weight:** 400g

#### Specifications

##### Control Mode:

- Button

##### Board Input Voltage:

- 24VDC

##### Input Min Current:

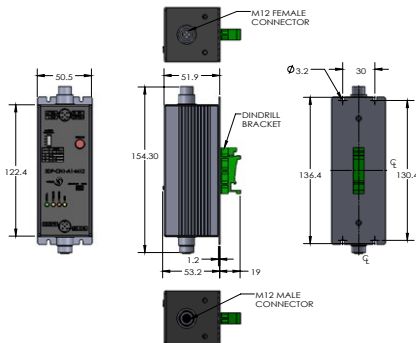
- 2.5 x LED Light Current

##### Mode:

- Constant & Strobe

##### Output Power Rating

- Constant Mode : 24V, 1.5A
- Strobe Mode : up to Max 50V / 4A
- Pulse Width : 1ms – 10ms (Pulse width depends on Input signal, Eg. Input 1ms= Pulse width 1ms)



#### Features

- Small and Compact Size
- Current Sense – Able to sense lighting current during start up. (Minimum 30mA lighting current requirement)
- Overdriving up to 3x current



**Consist of**

- SDA-M (Master Controller)
- SDA-CH1-A1 (Slave Controller)
- SDA-CH1-X2 (Master & Slave Controller)

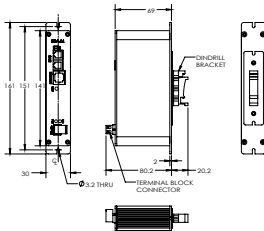
**Specifications**

Lighting Output	1 Channel
Board Voltage	24VDC
Minimum Input Current	2.5 x LED Light Current
Operation Mode	Constant 24V/2A (PWM Technique) Calibration: Current resolution 1mA  Pulse 50V / 6A (Boost Up Voltage) Pulse width : 1us-10ms (1us resolution) Pulse Trigger Delay: 0us-1,000,000us (1us resolution)
I/O	1 input & 1 output
Input Response Time	<1us
Output Power Rating	Constant: 24V /2A Strobe: 50V Max / 6A Max
Output Response Time	≤3us
Cascade Channels	Up to 32 Channels
Interface	TCPIP (Ethernet)
Protection	Current Sense Temperature Sense (cut off at 70°C) *Note : Need to install External 10K Thermistor
Casing	Aluminium
Mounting	Panel mount / Din Rail

**Advantages**

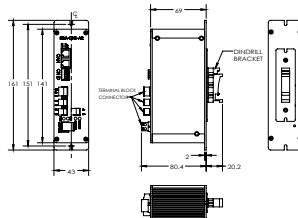
- User Friendly
- Continuous Function (PWM technique)
- Overdrive function (Boost Up Voltage)
- Fault detection in advance
- Current Sense
- Temperature sense
- Cascade up to 32 channels
- Easy to install.

**SDA-M**



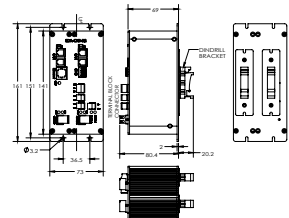
**Dimension:**161 x 30 x 100 (mm)  
**Weight:** 220g

**SDA-CH1-A2**



**Dimension:**161 x 43 x 100 (mm)  
**Weight:** 340g

**SDA-CH1-X2**



**Dimension:**161 x 73 x 100 (mm)  
**Weight:** 560g

# Camera & Lighting Mounting Solution Kit (VL-DK-CM-XXX-V1)

VL-DK-CM-XXX-V1 comes with multiple types of mounting brackets which are able to support more than 50 Illuminators.



Vertical Track	VT-195	VT-328	
LPR Series	LPR-084-095120-01	LPR-057-065092-01	LPR-036-045070-01
LPS Series	LPS-080-088136-01	LPS-055-062099-01	LPS-055-062099-01
LP-IDS4 Series	LP-IDS4-050	LP-IDS4-070	LP-IDS4-100
LP-CAS2 Series	CS-CAS25-01	CS-CAS-040-01	
Lens Retrofit	MK32-C2-M25.5-49102-01	MK32-C2-M30.5-28070-01	
Flexible Arm	FLA-1000-M1	Camera Stand	
Adjustable Angle		Power Cord (US/EU/UK) + Power Adapter	
Extension Bar		SD-1000-D1 x 2 units	

## CAMERA HOLDER

Vertical	CMW-XXX	Rotation	CMW-RB-XXX
Camera Stand LP	Camera Stand LPR	Camera Stand LPS	Camera Stand LP

## Lighting Demo Kit (VL-LIGHTING-V1)

VL-Lighting-V1 comes with few types illuminators. Suitable for lab and production use.



PICTURE	DESCRIPTION	LIGHTING PATTERN	QTY
	HBLD3-00-320-1-W-24V		1
	HBL3-00-320-1-B-24V		1
	HBR3-00-090-X-IR860-24V		1
	HSBT2-00-060-X-IR860-24V		1
	HBQ3-00-100-3-R-24V		1
	HBBX-00-160X160-X-W-24V		1
	SD-1000-D1		2
	POWER CORD(US/EU/UK) +POWER ADAPTER		1

# VISIONLUX IP ENCLOSURE



VisionLux IP Enclosure is designed to protect your camera, lighting and lens from dust and protected against water projected from a nozzle (IP65)

It also secures your system in place for a better and stable inspection. For example, on a moving robot arm.

Advantages:

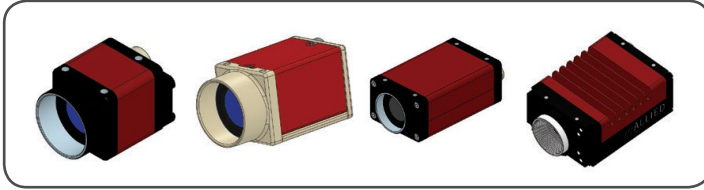
- Secure your camera, lens and lighting
- Come with fitting accessories (lighting, bracket, cable & camera mounting)
- Save time
- Save cost
- Robust design
- Easy to use

It is one of our plug and play module which is so flexible and convenient to use. Customized units are available to fit special lighting, camera and lens.

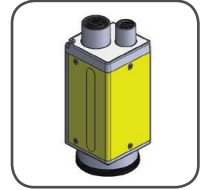


## Camera Compatibility

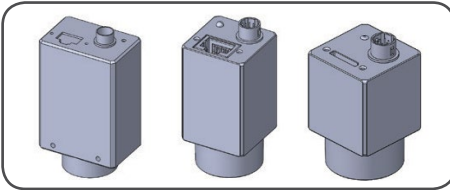
The camera's illustrated below are compatible with the modules



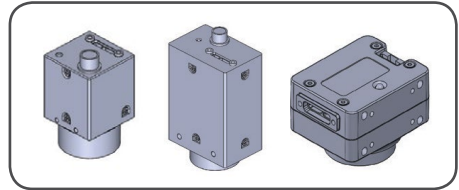
Allied Vision



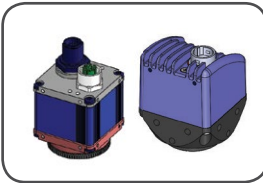
Cognex



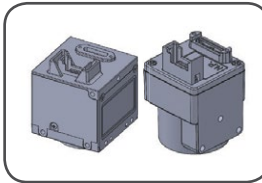
HIK-Vision



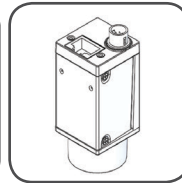
FLIR



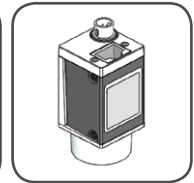
Matrix Vision



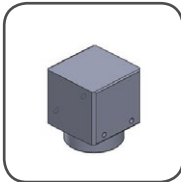
Tele-Toshiba



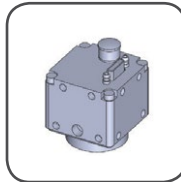
Datalogic



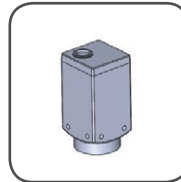
Basler



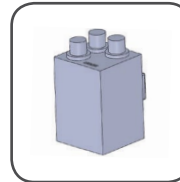
Teledyne



Omron



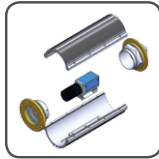
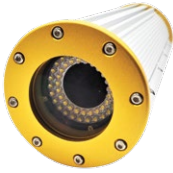
Keyence



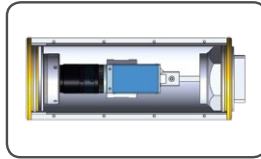
Sensopart

## IPE Enclosure-Dimension 080

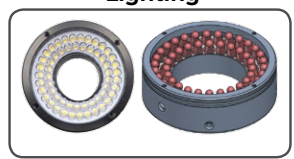
The camera's illustrated below are compatible with the modules



Exploded View



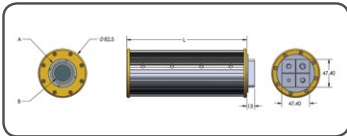
Cross Section



Lighting

Double Row

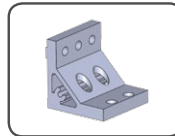
### Dimension



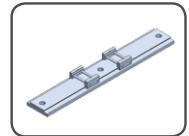
### Bracket



Joint-Bracket 080

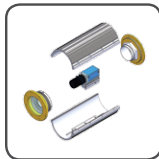
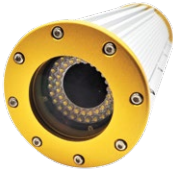


L Bracket 080

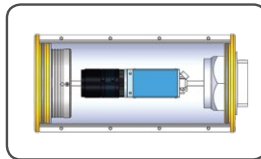


Vertical Track 080

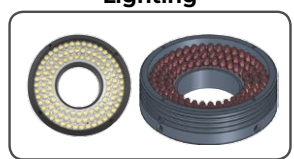
## IPE Enclosure-Dimension 100



Exploded View



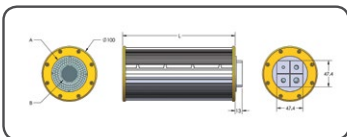
Cross Section



Lighting

Triple Row

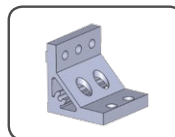
### Dimension



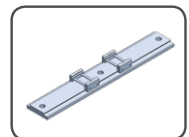
### Bracket



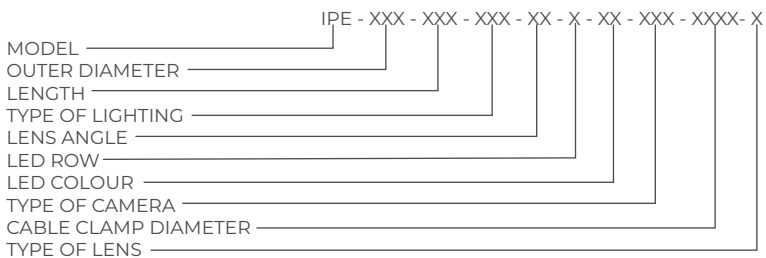
Joint-Bracket 100

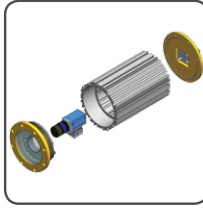
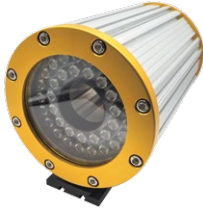


L Bracket 100

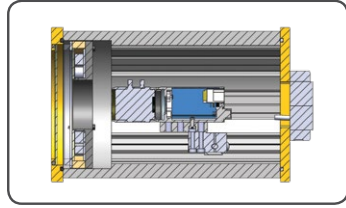


Vertical Track 100



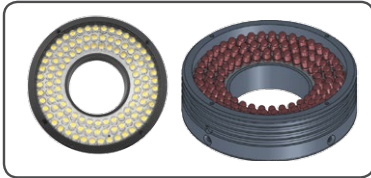


Exploded View



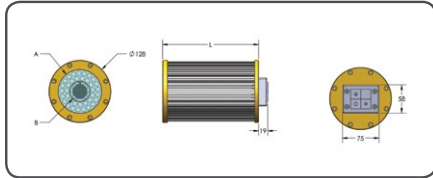
Cross Section

### Lighting

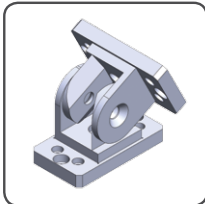


Triple Row

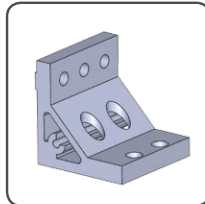
### Dimension



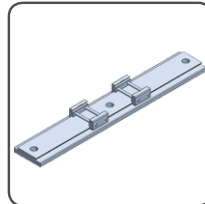
### Bracket



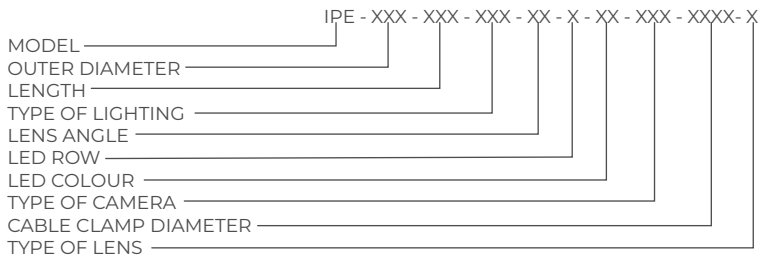
Joint-Bracket 130



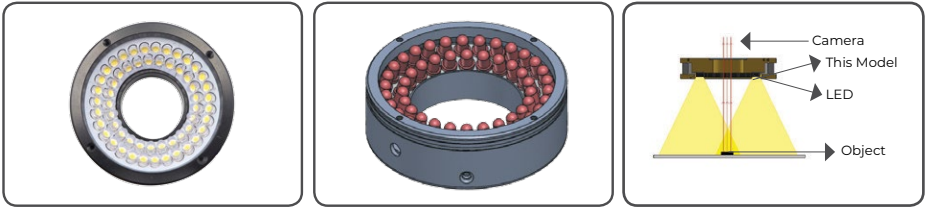
L Bracket 130



Vertical Track 130

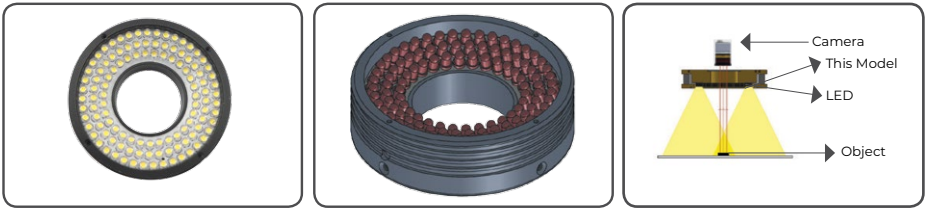


### Lighting for Dimension 080



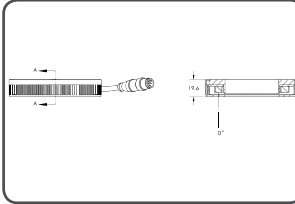
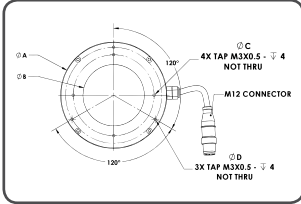
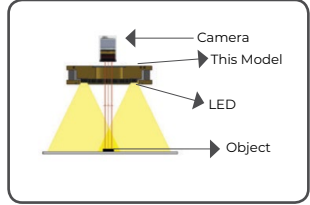
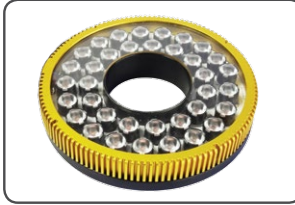
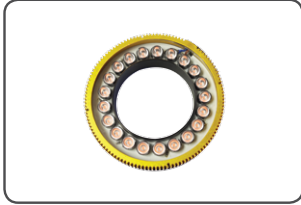
Model	Voltage / Watt	Color	Current	Weight (g)
LSW-15-050-2-X-24V	24V / 2.16W 24V / 2.52W	● ● ● ○ ● ●	90mA 105mA	60g

### Lighting for Dimension 100



Model	Voltage / Watt	Color	Current	Weight (g)
LSW-15-070-3-X-24V	24V / 4.32W 24V / 5.76W	● ● ● ○ ● ●	180mA 240mA	100g

## Lighting for Dimension 130

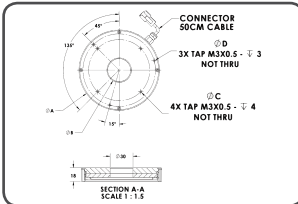
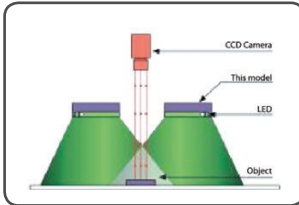


M12 Male Connector

M12 Pin Assignment

PIN 1	BROWN	24V
PIN 2	WHITE	-
PIN 3	BLUE	GND
PIN 4	BLACK	-
PIN 5	GRAY	-

Model	Voltage / Watt	Color	Current	Weight (g)
HLSW-00-100-1-X	24V / 7.56W 24V / 7.56W	● ● ● ○ ● ●	315mA 315mA	220g
HLSW-00-100-2-X	24V / 11.52W 24V / 11.52W	● ● ● ○ ● ●	480mA 480mA	260g



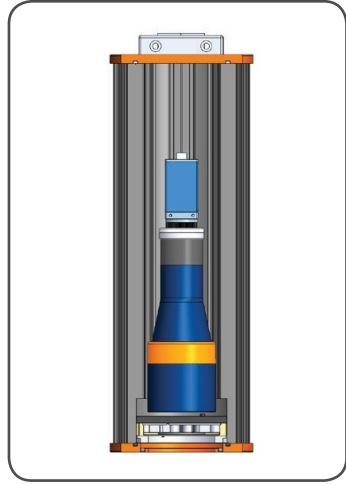
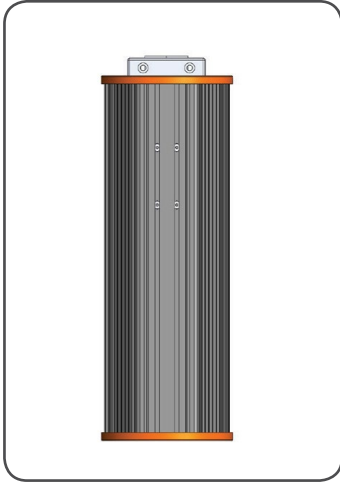
M12 Male Connector

M12 Pin Assignment

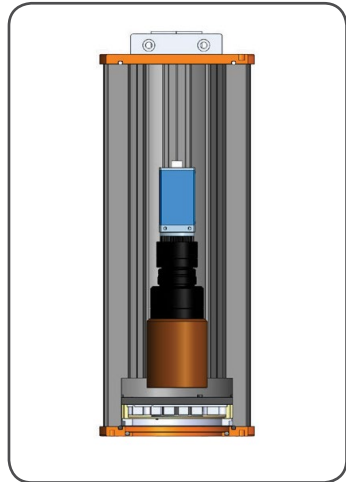
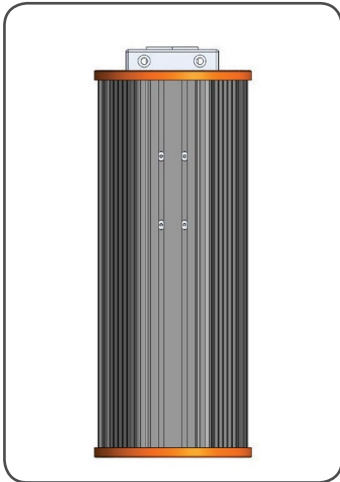
PIN 1	BROWN	24V
PIN 2	WHITE	-
PIN 3	BLUE	GND
PIN 4	BLACK	-
PIN 5	GRAY	-

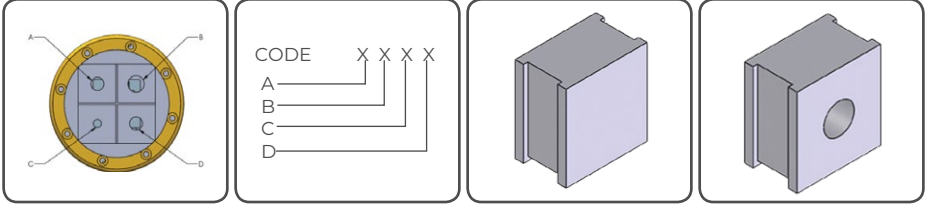
Model	Voltage / Watt	Color	Current	Weight (g)
DFR4-00-100-1-X	24V / 5.40W 24V / 5.40W	● ● ● ○ ● ●	225mA 255mA	160g

IP-Enclosure-TC-23036



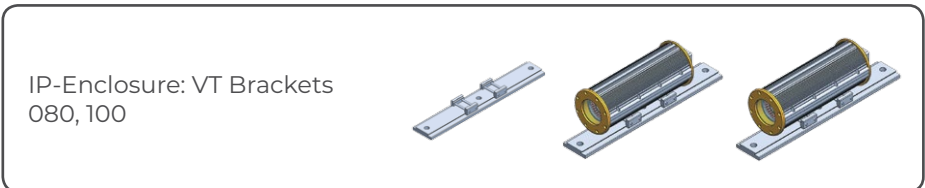
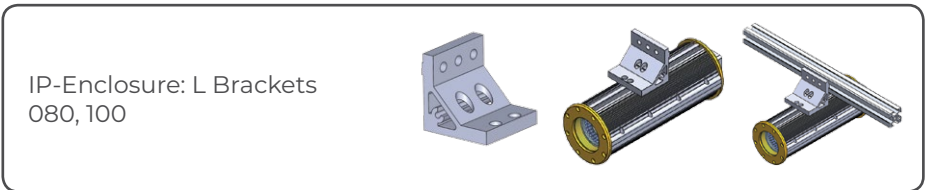
IP-Enclosure-MP-05X

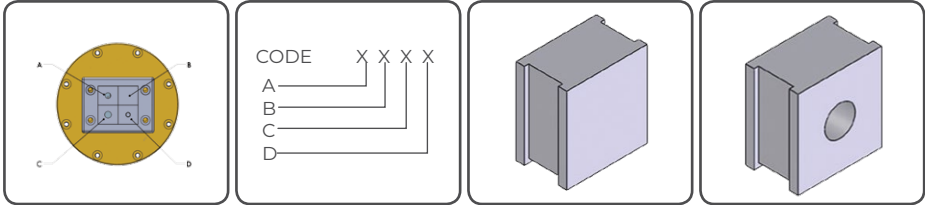




Model	Cable Diameter (mm)	Code	Model	Cable Diameter (mm)	Code
QTB	-	N	QT4	Ø 4-5mm	4
QT3	Ø 3-4mm	3	QT5	Ø 5-6mm	5
			QT6	Ø 6-7mm	6

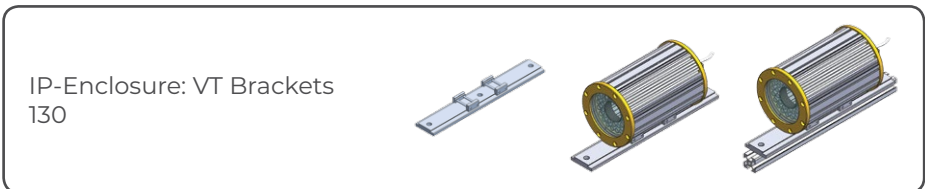
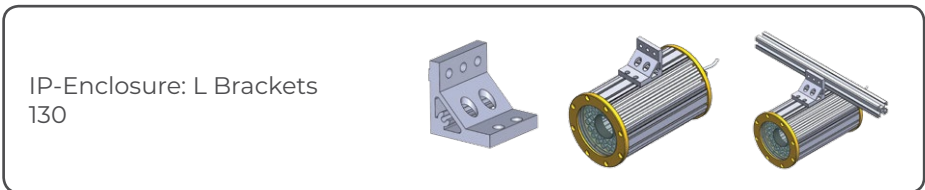
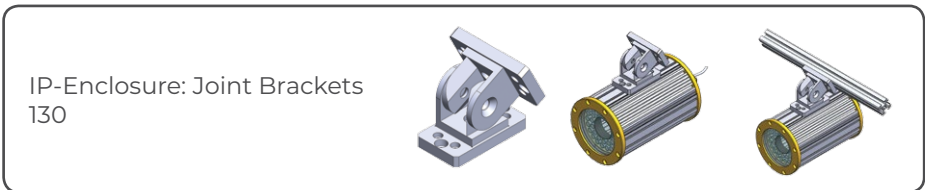
**Brackets**








Model	Cable Diameter (mm)	Code	Model	Cable Diameter (mm)	Code
BTK	NIL	N	KT-5	Ø 5-6mm	5
KT-3	Ø 3-4mm	3	KT-6	Ø 6-7mm	6
KT-4	Ø 4-5mm	4	KT-7	Ø 7-8mm	7



### Brackets










# ACCESSORIES LIST

Bracket Part Number	Photo	Mounting Type	Model	Bracket Quantity	Include Insert Nut (in)	
					Qty (in)	Qty (in)
AM-00-M6		Join Bracket	HBBX-00-160X160-X-X-24V HBL3-00-160-1-X-24V HLBD3-00-160-1-X-24V HBR3-00-090-X-X-24V HBR3-00-160-X-X-24V HBQ3-00-100-3-X-24V HSBT2-00-060-X-X-24V HSBT2-00-080-X-X-24V HBL3-00-160-2-X-24V	1	1	1
			HBBX-00-160X240-X-X-24V HBBX00-160X320-X-X-24V HBBX-00-240X320-X-X-24V HBBX-00-320X320-X-X-24V HBBQ-00-240X240-X-X-24V HBL3-00-320-1-X-24V HBLP-00-320-1-X-24V	2	2	2
HM-01-M6		L-Bracket (H) (5 Holes)	HBL3-00-160-1-X-24V HLBD3-00-160-1-X-24V	1	2	2
			HBBX-00-160X160-X-X-24V HBR3-00-090-X-X-24V HBR3-00-160-X-X-24V HBQ3-00-100-3-X-24V HBL3-00-320-1-X-24V HBQ3-00-160-6-X-24V	2	4	4
			HBBX-00-160X240-X-X-24V HBBX-00-160X320-X-X-24V HBBX-00-240X320-X-X-24V HBBX-00-320X320-X-X-24V HBBQ-00-240X240-X-X-24V HDLR-00-200-1-X-24V HIDS-00-200-1-X-24V HBAX-00-560X560-X-24V HBAX-00-600X600-X-24V HBAQ-00-560X560-X-24V	4	8	8
VM-01-M6		L-Bracket (V) (4 Holes)	HBBX-00-160X160-X-X-24V HBBX-00-160X240-X-X-24V HBBX-00-240X320-X-X-24V HBBX-00-320X320-X-X-24V HBBQ-00-240X240-X-X-24V HBR3-00-090-X-X-24V HBR3-00-160-X-X-24V HBQ3-00-100-3-X-24V HBQ3-00-160-6-X-24V HIDL-00-200-1-X-24V HIDS-00-200-1-X-24V HBAX-00-560X560-X-24V HBAX-00-600X600-X-24V HBAQ-00-560X560-X-24V	2	2	2

# ACCESSORIES LIST

Bracket Part Number	Photo	Mounting Type	Model	Bracket Quantity	Include Insert Nut (in) & Cap Screw (cs)	
					Qty (in)	Qty (in)
HM-03-M6		L-Bracket	HBL3-00-070-1-UV-24V	1	2	2
HM-02-M6		L-Shape Plate	HBL3-00-160-1-X-24V HLBD3-00-160-1-X-24V HBL3-00-160-2-X-24V	1	2	2
			HBBX-00-160X160-X-X-24V HBR3-00-090-X-X-24V HBQ3-00-100-3-X-24V HBL3-00-320-1-X-24V HBLP-00-320-1-X-24V	2	4	4
			HBBX-00-160X240-X-X-24V HBBX00-160X320-X-X-24V HBBX-00-240X320-X-X-24V HBBX-00-320X320-X-X-24V HBBQ-00-240X240-X-X-24V HBR3-00-160-1-X-24V HBQ3-00-160-6-X-24V HDLR-00-200-1-X-24V HIDS-00-200-1-X-24V	4	8	8

Bracket Part Number	Photo	Mounting Type	Model	Bracket Quantity	Include Insert Nut (in) & Cap Screw (cs)	
					Qty (in)	Qty (in)
CM-04-M6		L-Bracket	HBL3-00-070-1-UV-24V HBL3-00-160-1-X-24V HBL3-00-320-1-X-24V HBL3-00-160-2-X-24V	2	4	4
CM-03-M6		L-Shape Plate	HBL3-00-070-1-UV-24V HBL3-00-160-1-X-24V HBL3-00-320-1-X-24V HLBD3-00-160-1-X-24V	1	2	2

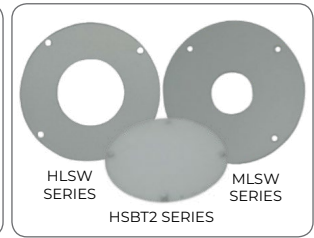
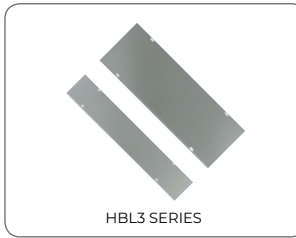
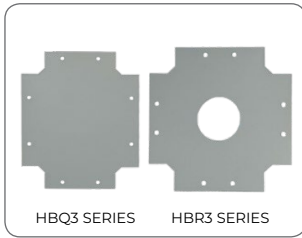
Extension Cable Part Number	Photo	Extension Type
EXT-CS-M12F-0.3M-24V		Cascade Extension Cable
EXT-SM-M12F-3M-24V		M12 With SM Connector
EXT-FL-M12F-3M-24V		M12 With Flying Lead
EXT-RGBW-FL-M12F-3M-24V		M12 With Flying Lead
EXT-RGBW-FL-M12F-0.5M-24V		M12 With 24V Connector



## Optional Diffuser

Diffuser can be added to illumination for uniform light distribution. Adding a diffuser helps to reduce glare from applications and produce lighting that is softer, more beautiful and more shadow-free.

The thickness of a diffuser is 2mm. Material that used for Diffuser-H is PAA-00SK and Diffuser-M is PAA-75SK.



Part No.
HBQ3-00-100-3-DIFFUSER-H
HBQ3-00-160-6-DIFFUSER-H
HBQ3-00-152X180-X-(RGBW)-DIFFUSER-H
HBQ3-00-100-3-DIFFUSER-M
HBQ3-00-160-6-DIFFUSER-M
HBQ3-00-152X180-X-(RGBW)-DIFFUSER-M
HBR3-00-090-X-DIFFUSER-H
HBR3-00-160-X-DIFFUSER-H
HBR3-00-190-X-DIFFUSER-H
HBR3-00-152X216-X-(RGBW)-DIFFUSER-H
HBR3-00-090-X-DIFFUSER-M
HBR3-00-160-X-DIFFUSER-M
HBR3-00-190-X-DIFFUSER-M
HBR3-00-152X216-X-(RGBW)-DIFFUSER-M

Part No.
HBL3-00-160-1-DIFFUSER-H
HBL3-00-320-1-DIFFUSER-H
HBL3-00-200-1-(RGBW)-DIFFUSER-H
HBL3-00-160-1-DIFFUSER-M
HBL3-00-320-1-DIFFUSER-M
HBL3-00-200-1-(RGBW)-DIFFUSER-M
HBL3-00-160-2-DIFFUSER-H
HBL3-00-160-2-DIFFUSER-M

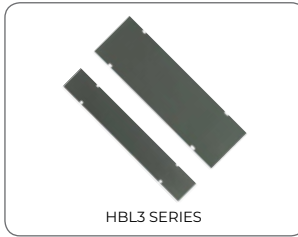
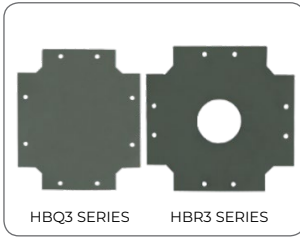
Part No.
HSBT2-00-060-X-DIFFUSER-H
HSBT2-00-080-X-DIFFUSER-H
HSBT2-00-060-X-DIFFUSER-M
HSBT2-00-080-X-DIFFUSER-M

Part No.
HLSW-00-050-1-DIFFUSER-H
HLSW-00-080-1-DIFFUSER-H
HLSW-00-100-1-DIFFUSER-H
HLSW-00-130-1-DIFFUSER-H
HLSW-00-100-2-DIFFUSER-H
HLSW-00-130-2-DIFFUSER-H
HLSW-00-050-1-DIFFUSER-M
HLSW-00-080-1-DIFFUSER-M
HLSW-00-100-1-DIFFUSER-M
HLSW-00-130-1-DIFFUSER-M
HLSW-00-100-2-DIFFUSER-M
HLSW-00-130-2-DIFFUSER-M

Part No.
MLSW-00-050-2-DIFFUSER-H
MLSW-00-080-4-DIFFUSER-H
MLSW-00-100-4-DIFFUSER-H
MLSW-00-130-6-DIFFUSER-H
MLSW-15-050-2-DIFFUSER-H
MLSW-15-080-4-DIFFUSER-H
MLSW-15-100-4-DIFFUSER-H
MLSW-15-130-6-DIFFUSER-H
MLSW-30-050-2-DIFFUSER-H
MLSW-30-080-4-DIFFUSER-H
MLSW-30-100-4-DIFFUSER-H
MLSW-30-130-6-DIFFUSER-H
MLSW-45-050-2-DIFFUSER-H
MLSW-45-080-4-DIFFUSER-H
MLSW-45-100-5-DIFFUSER-H
MLSW-45-130-6-DIFFUSER-H
MLSW-00-050-2-DIFFUSER-M
MLSW-00-080-4-DIFFUSER-M
MLSW-00-100-4-DIFFUSER-M
MLSW-00-130-6-DIFFUSER-M
MLSW-15-050-2-DIFFUSER-M
MLSW-15-080-4-DIFFUSER-M
MLSW-15-100-4-DIFFUSER-M
MLSW-15-130-6-DIFFUSER-M
MLSW-30-050-2-DIFFUSER-M
MLSW-30-080-4-DIFFUSER-M
MLSW-30-100-4-DIFFUSER-M
MLSW-30-130-6-DIFFUSER-M
MLSW-45-050-2-DIFFUSER-M
MLSW-45-080-4-DIFFUSER-M
MLSW-45-100-5-DIFFUSER-M
MLSW-45-130-6-DIFFUSER-M

## Optional Polarizer

A polarizer is an optical filter that allows light waves of one polarisation to flow through while blocking light waves of others. It may convert an undefined or mixed polarised light beam into polarised light by filtering it



Part No.
HBQ3-00-100-3-POLARIZER-H
HBQ3-00-152X180-X-(RGBW)-POLARIZER-H
HBQ3-00-160-6-POLARIZER-H

Part No.
HBR3-00-090-X-POLARIZER-H
HBR3-00-152X216-X-(RGBW)-POLARIZER-H
HBR3-00-160-X-POLARIZER-H
HBR3-00-190-X-POLARIZER-H

Part No.
HBL3-00-160-1-POLARIZER-H
HBL3-00-320-1-POLARIZER-H
HBL3-00-200-1-(RGBW)-POLARIZER-H
HBL3-00-160-2-POLARIZER-H

Part No.
HSBT2-00-060-X-POLARIZER
HSBT2-00-080-X-POLARIZER

Part No.
HLSW-00-050-1-POLARIZER
HLSW-00-080-1-POLARIZER
HLSW-00-100-1-POLARIZER
HLSW-00-130-1-POLARIZER
HLSW-00-130-2-POLARIZER

Part No.
MLSW-00-050-2-POLARIZER
MLSW-00-080-4-POLARIZER
MLSW-00-100-4-POLARIZER
MLSW-00-130-6-POLARIZER
MLSW-15-050-2-POLARIZER
MLSW-15-080-4-POLARIZER
MLSW-15-100-4-POLARIZER
MLSW-15-130-6-POLARIZER
MLSW-30-050-2-POLARIZER
MLSW-30-080-4-POLARIZER
MLSW-30-100-4-POLARIZER
MLSW-30-130-6-POLARIZER
MLSW-45-050-2-POLARIZER
MLSW-45-080-4-POLARIZER
MLSW-45-100-5-POLARIZER
MLSW-45-130-6-POLARIZER

## Visionlux Warranty

Every products manufactured are thoroughly checked and tested before shipment. We guarantee our products to be free of manufacturer defects, including anything required in the assembly process and the materials. If a defect develops during warranty period, we encourage you to return the complete product to the manufacturer or the distributor you purchased from. We will inspect the unit, and if a defect is found, it's shall be the manufacturer's option, to either repair or replace the product at no additional cost based on the warranty term stated below.

## Warranty Product:

"Product" in this policy refer to all lighting manufactured by Visionlux Technologies only.

Other range of warranty (accessories & controller), please contact [warranty@visionlux.net](mailto:warranty@visionlux.net) for further information before purchase.

## Warranty Period:

Visionlux products are covered under limited warranty. If you purchase the products from distributors, please check the warranty details and period from the distributor where the products are purchased from.

Products with limited warranty:

Standard Lighting : 3 years

Customize Lighting : 1 year with condition-refer to warranty team

UR/IR Lighting : 1 year

## Commencement of Warranty

To qualify for the 3 years warranty, the product must be registered. If the product is not registered, the warranty reverts to 1 year. Commencement date will be based on the date of registration (between the period of 3 months of manufacturer shipping date) in the warranty webpage.

All Products warranty to be register at: <https://onlineapps.visionlux.net/#/external/warranty>

(if products are registered after the 3 months of manufacturer shipping date, the warranty will automatically start, based on the manufacturing date stated at the lighting tag.)

## Warranty Term

Visionlux will only replace the product (1 to 1 replacement) or repair the products Free of Charge:

- If the product fails to function under the use of our specified condition in accordance with the instruction guide and other written cautions.
- If the products (except UV, IR, Customization Products) radiant quantity\* decreases up to 50% or less of it's initial radiant quantity under the use of our specified condition in accordance with the instruction guide and other written cautions

## Chargeable Fees

Visionlux will only charge repair fees under the following conditions:

- If the product has been subjected to inappropriate usage, unauthorized repairs, or modification from its original design.
- If the product has been damaged from impacts due to inappropriate handling.
- If damage to the products result from external causes including accidents, fire, pollution, riots, communication failures, earthquakes, thunderstorms, wind and flood damage, or any other act of providence, or from any extraordinary conditions such as electrical surges, water leakage, condensation, or the use of the chemicals.
- If the damage results is due to inappropriate connection to any power supply or to any equipment which the manufacturer do not supply or do not specify for use.

## Shipping Fees

Shipping fees of the "products to be fixed" will be borne by purchaser, Shipping fees (excluding taxes & expedite shipping fees) for the "fixed products" will be borne by manufacturer.

## Liability

Visionlux shall not be held liable for any liability or damages (including damage of equipment, bodily injury, loss of opportunities, loss of profits, any other damages resulting from force majeure event, failure, delayed on delivery or non-delivery and etc) causes by the products or its defects.

## Extended Warranty Period

Warranty may be extended at a nominal fee. Please contact warranty team for more information.

## Warranty Claim

All warranty claim must be applied online through the warranty claim website. Claim from other channels will not be entertained.

Claim at: <https://onlineapps.visionlux.net/#/external/warrantyclaim>

For Full warranty information please refer to: <https://onlineapps.visionlux.net/#/external/warranty> or write to [warranty@visionlux.net](mailto:warranty@visionlux.net)

## Online Customization

Online Customization system allows you to customize cascaded lighting in a cost and time saving way.

- Serve as 24/7 automated designer
- Enables browsing, designing and downloading of electric data and 2D drawing immediately
- Request quotation online
- A choice of partially customized to fully customized products
- 11 range of models to choose from

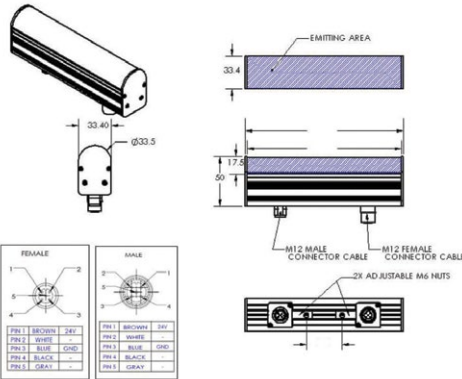
Check it out at our website now: [www.visionlux.co](http://www.visionlux.co)

Size X:

Color:

Estimate Current :

Colour	Wavelength (nm)	Current (mA)	Voltage (V)	Watt (W)	Weight (g)
W	X 0.296-0.311 X Range: 0.296 - 0.311 Y 0.276-0.294 Y Range: 0.276 - 0.294		24		⊖
R	620-630 Range: 620-630		24		⊖
G	520-535 Range: 520-535		24		⊖
B	465-485 Range: 465-485		24		⊖
IR850	850-860 Range: 850-860		24		⊖



## Our Facilities



- ▶ Laser Cut Machine
- ▶ Laser Marking Machine
- ▶ Intensity Measurement System
- ▶ LED Sorting Machine
- ▶ 3D Printing
- ▶ Pick & Place Machine
- ▶ Burn In Machine



**Visionlux Technology Sdn Bhd**

No 1A-1, Tingkat Kenari 6, Desaria, Sungai Ara,  
11900 Bayan Lepas, Penang, Malaysia.

Tel: +604-646 8428 | Fax: +604-646 3428

For Enquiry: [enquiry@visionlux.net](mailto:enquiry@visionlux.net)