

# Inductive Proximity Switch



## IM020BM60VB8

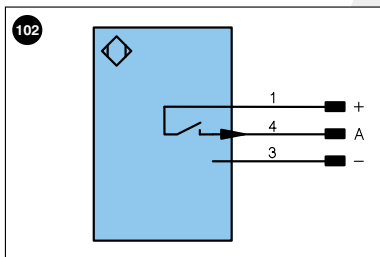
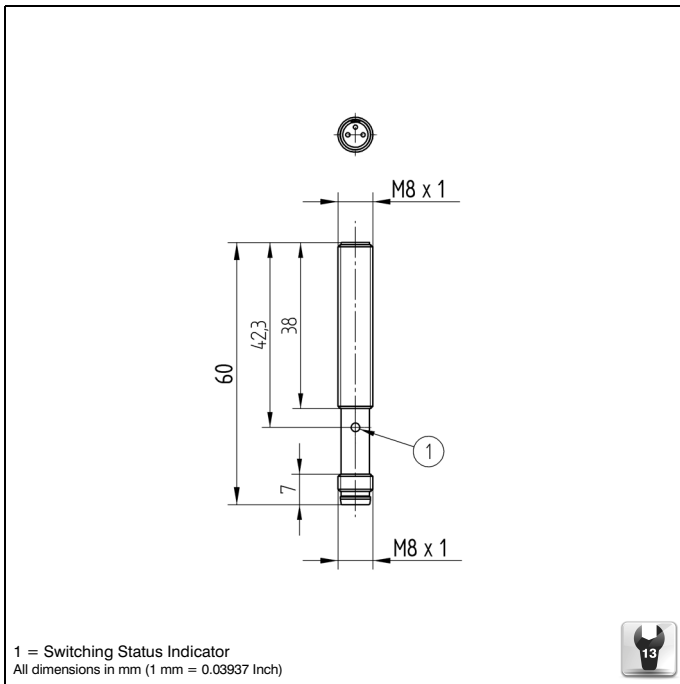
Part Number



### Technical Data

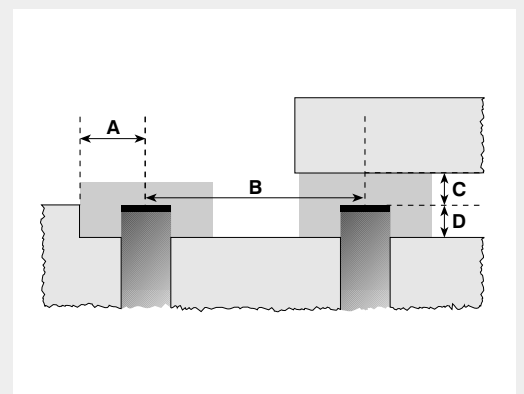
<b>Inductive Data</b>	
Switching Distance	2 mm
Correction Factors V2A/CuZn/Al	0,73/0,55/0,45
Mounting	flush
Mounting A/B/C/D in mm	0/16/6/0
Switching Hysteresis	< 15 %
<b>Electrical Data</b>	
Supply Voltage	10...30 V DC
Current Consumption (U <sub>b</sub> = 24 V)	< 6 mA
Switching Frequency	1500 Hz
Temperature Drift	< 10 %
Temperature Range	-25...80 °C
Switching Output Voltage Drop	< 2,5 V
Switching Output / Switching Current	200 mA
Residual Current Switching Output	< 100 µA
Short Circuit Protection	yes
Reverse Polarity and Overload Protection	yes
Protection Class	III
<b>Mechanical Data</b>	
Housing	CuZn, nickel-plated
Full Encapsulation	yes
Degree of Protection	IP67
Connection	M8 × 1; 3-pin
Stock Type	●
PNP NO	●
Connection Diagram No.	102
Suiting Connection Technology No.	8
Suiting Mounting Technology No.	200





Legend					
+	Supply Voltage +	U	Test Input	PoE	Power over Ethernet
-	Supply Voltage 0 V	Ū	Test Input inverted		
~	Supply Voltage (AC Voltage)	W	Trigger Input		
A	Switching Output (NO)	O	Analog Output		
Ā	Switching Output (NC)	O-	Ground for the Analog Output		Wire Colors according to DIN IEC 757
V	Contamination/Error Output (NO)	BZ	Block Discharge	BK	Black
V̄	Contamination/Error Output (NC)	AWV	Valve Output	BN	Brown
E	Input (analog or digital)	a	Valve Control Output +	RD	Red
T	Teach Input	b	Valve Control Output 0 V	OG	Orange
Z	Time Delay (activation)	SY	Synchronization	YE	Yellow
S	Shielding	E+	Receiver-Line	GN	Green
RxD	Interface Receive Path	S+	Emitter-Line	BU	Blue
TxD	Interface Send Path	±	Grounding	VT	Violet
RDY	Ready	SnR	Switching Distance Reduction	GY	Grey
GND	Ground	Rx +/-	Ethernet Receive Path	WH	White
CL	Clock	Tx +/-	Ethernet Send Path	PK	Pink
E/A	Output/Input programmable	Bus	Interfaces-Bus A(+)/B(-)	GNYE	Green Yellow
	IO-Link	La	Emitted Light disengageable		

## Mounting



Specifications are subject to change without notice