

Electrical Specification

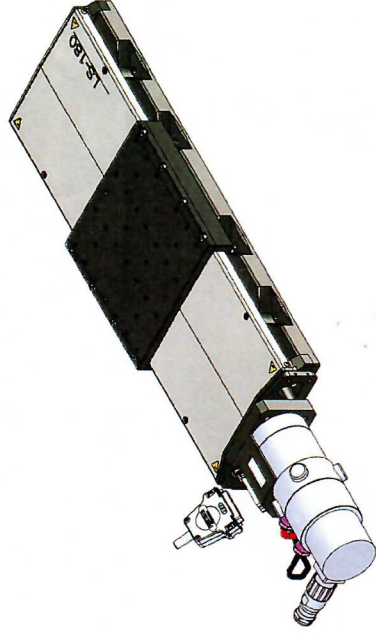


DC Motor RS-320H

motor-type	DC-brush
nominal voltage	VDC 48.6
max.cont. current	A 4.35
electrical resistance	Ohm 1.5
electrical inductance	mH 2.2
continues torque	mNm 500

Motor Brake

Supply Voltage	VDC 24
torque	Nm 1.5



Key Features

pitch	mm/rev 5
-------	----------

Rotary Encoder RS-422 Pinout

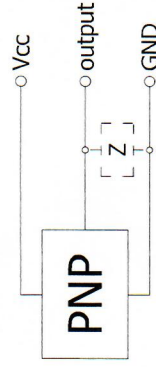
round 12pol (m)	Funktion
1	EB- Encoder Channel B-
3	EC+ Encoder Channel I+
4	EC- Encoder Channel I-
5	EA+ Encoder Channel A+
6	EA- Encoder Channel A-
8	EB+ Encoder Channel B+
10	GND Supply
12	VCC Supply Voltage

Axis Pinout

FM17W2 (m)	Funktion
A1	M+ DC Motor +
A2	M- DC Motor -
1	BR+ Supply Voltage Brake
3	BR- GND Supply Brake
10	LVCC Supply Voltage Limit-Switches
13	LE2 Limit-Switch forward
14	LE1 Limit-Switch reverse
15	LGND GND Supply Limit-Switches

Inductive Limit-Switches

Supply Voltage	VDC 10 - 30
Supply Current	mA < 12
Contact Type	PNP, normally closed



output

LE1: hard-limit in negative direction (near connectors)

LE2: hard-limit in positive direction

Rotary Encoder RS-422

Signal output	RS-422
Channels	2 + index
Counts per revolution	n 20000
Supply voltage	VDC 4.5 - 5.5
Current consumption	mA 150
Frequency range	kHz < 500
resolution	nm/inc. 250
1/resolution	inc./mm 4000